



SOUTHERN SANDOVAL COUNTY ARROYO FLOOD CONTROL AUTHORITY

IFB# 2020-03 – UPPER BOSQUE DE BERNALILLO FLOOD MITIGATION PROJECT

ADDENDUM #2

July 10, 2020

This Addendum consists of one (1) page and three (3) attachments. The information contained in this addendum shall be incorporated into the project bid and contract documents the same as if originally contained therein.

Bidders shall acknowledge receipt of this addendum on the Bid Proposal form in the space provided. Failure to acknowledge this addendum by any prospective bidder will render the bid non-responsive.

1. BID & CONTRACT DOCUMENTS

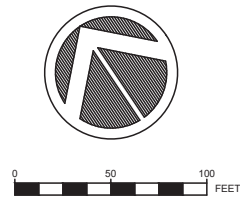
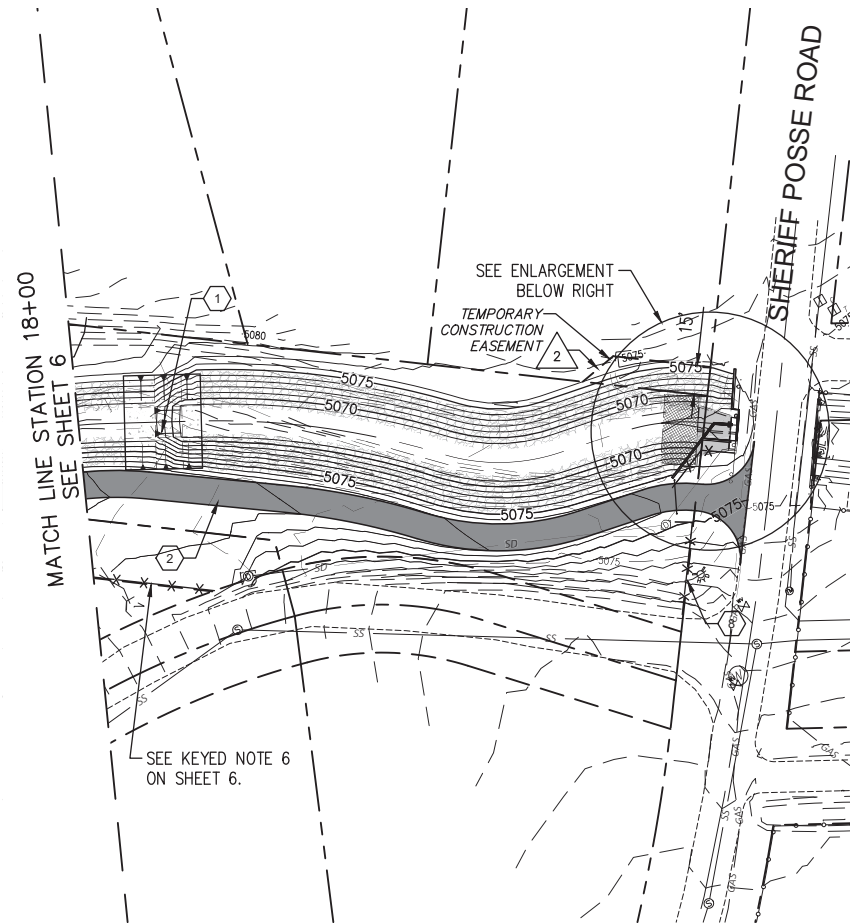
- Replace “Sheet 7 of 14” of the Construction Plans with the attached revised Sheet 7, which revises the Temporary Construction Easement boundary for the lot near the existing CBC. All TCE’s for the project will be strictly enforced.
- Bid Form, Page 20 – Revision of language in 7.01.F. This revision is intended to clarify the title of the required form.
- Unit Price Bid Proposal – Replace Unit Price Bid Proposal Pages 23 & 24 with the attached revised version. This revision included addition of a new Bid Item for Guardrail Removal & Replacement.

All other provisions of the Bid and Contract Documents shall remain unchanged. This Addendum is hereby made a part of the Bid and Contract Documents to the same extent as those provisions contained in the originals.

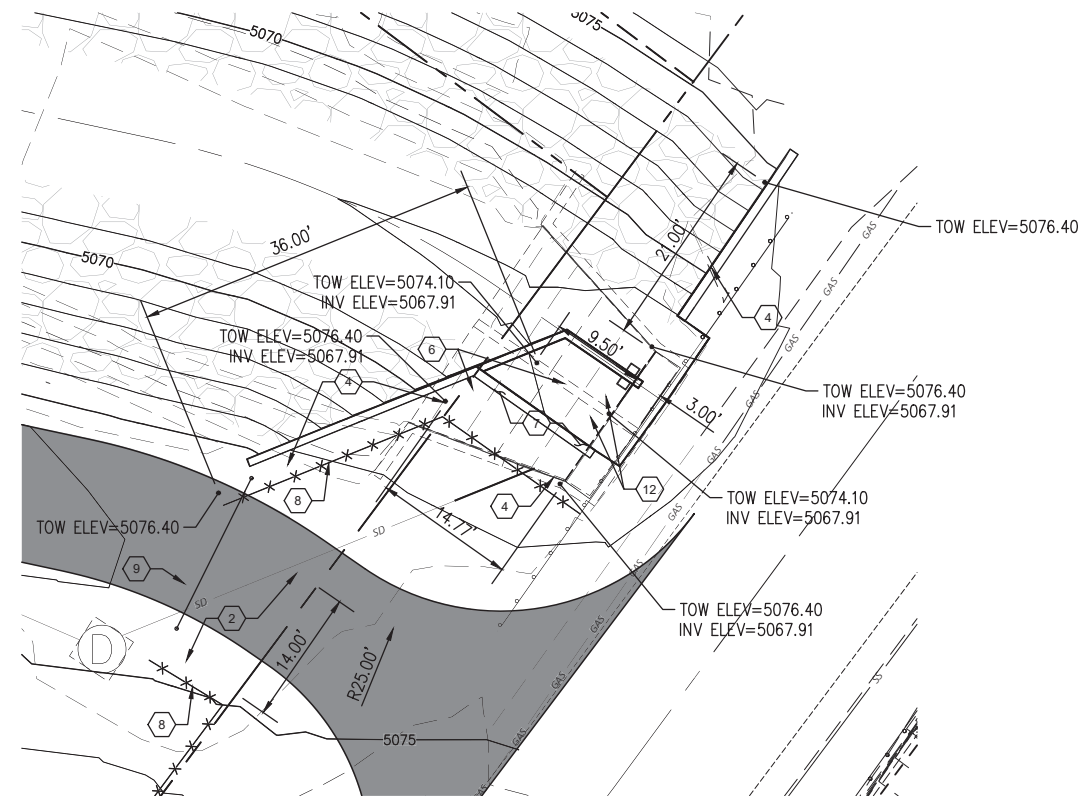
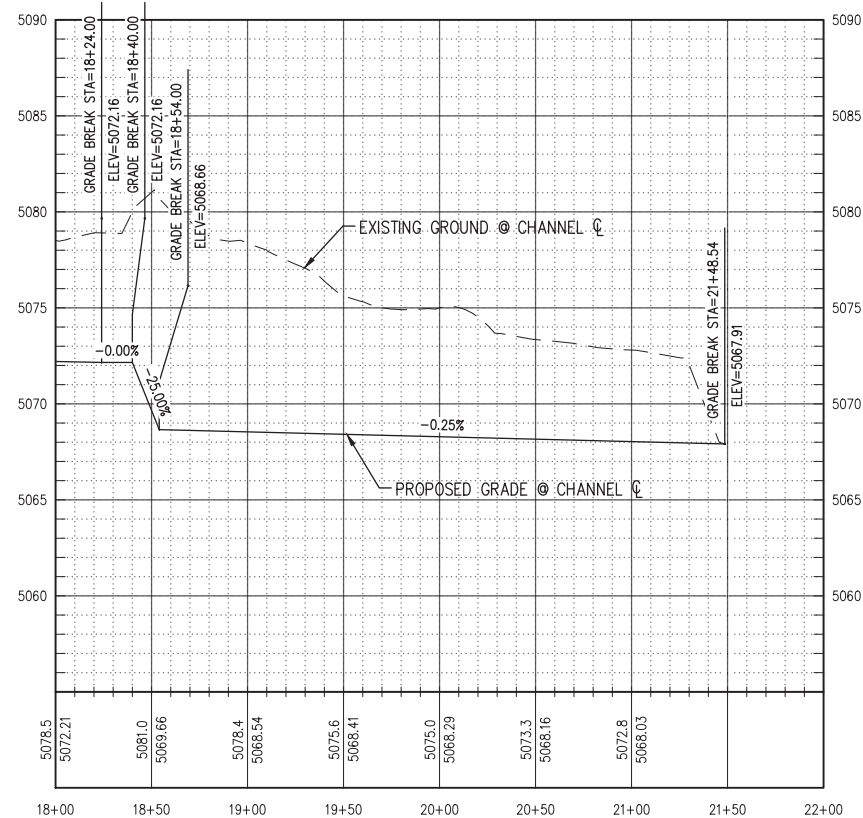

Andrés Sanchez, PE
SSCAFCA Design Services Director

Attachments:

1. Revised Sheet 7 of the Construction Plans (11x17 and 22x34 format, 2 pages)
2. Revised Bid Form Page 20 (1 page)
3. Revised Unit Price Bid Proposal (2 pages)



ENLARGEMENT - REMOVALS ONLY



ENLARGEMENT

KEYED NOTES:

1. CONSTRUCT CONCRETE DROP STRUCTURE PER DETAIL 2 ON SHEET 9.
2. CONSTRUCT 14' WIDE MAINTENANCE ACCESS WITH 6" COMPACTED BASE COURSE.
3. SAWCUT, REMOVE & DISPOSE EXISTING CONCRETE STRUCTURE AND PIPE RAIL 3' FROM FACE OF EXISTING CONCRETE BOX CULVERT.
4. CONSTRUCT CANTILEVER RETAINING WALL PER NMDOT STD. DWG. 511-80-1,2&3/3, SEE SHEETS 12-14. H=10', TOW ELEV=5076.40. 12" SUBGRADE PREP REQUIRED UNDER & ON EACH SIDE OF WALL FOUNDATIONS & 12" EACH . TIE REINFORCEMENT TO EXISTING CONCRETE BOX CULVERT W/#6 DOWELS DRILL & EPOXY 8" DEEP. COORDINATE WALL DRAIN PLACEMENT & TERMINATION LOCATIONS W/ENGINEER.
5. REMOVE EXIST. 48" RCP PENETRATION TO FIRST PIPE JOINT.(APPROX. 9 LF) RE-CONNECT EXISTING 48" RCP PENETRATION IN NEW RETAINING WALL PER AMAFCA STD. DETAIL - DWG #105 SEE SHEET 11.
6. CONSTRUCT CANTILEVER RETAINING WALL PER NMDOT STD. DWG. 511-80-1,2&3/3, SEE SHEETS 12-14. H=8',TOW ELEV=5074.10. 12" SUBGRADE PREP REQUIRED UNDER & ON EACH SIDE OF WALL FOUNDATIONS. TIE REINFORCEMENT TO EXISTING CONCRETE BOX CULVERT W/#6 DOWELS DRILL & EPOXY 8" DEEP. COORDINATE WALL DRAIN PLACEMENT & TERMINATION LOCATIONS W/ENGINEER.
7. CONSTRUCT 4" CONCRETE SLAB WITH NO REINFORCEMENT AT FINISHED GRADE, INCLUDE SUBGRADE PREP & SEALED EXPANSION JOINT ALL SIDES. FF=5067.91.
8. CONSTRUCT 100± LF OF 5 STRAND WIRE FENCE PER DETAIL SHEET 10. MAINTAIN 1' CLEARANCE FROM FACE OF NEW RETAINING WALL.
9. INSTALL 16' GATE PER DETAIL SHEET 10. COORDINATE GATE SWING DIRECTION WITH ENGINEER.
10. REMOVE 50± LF EXISTING GUARDRAIL FOR CONSTRUCTION AND REPLACE.
11. REMOVE APPROX. 27 CY BURIED WIRED ENCLOSED RIPRAP.
12. INSTALL ALUMINUM STEPS EACH SIDE PER APWA DWG. 2229. SEE SHEET 8. COORDINATE WITH OWNER ON FINAL LOCATION.



**Southern Sandoval
County
Arroyo Flood Control
Authority**

1041 Commercial Dr. S.E.
Rio Rancho, New Mexico 87124
505-892-RAIN (7246)
505-892-7241 (Fax)
www.sscafca.com



UPPER BOSQUE DE BERNALILLO
FLOOD MITIGATION PROJECT

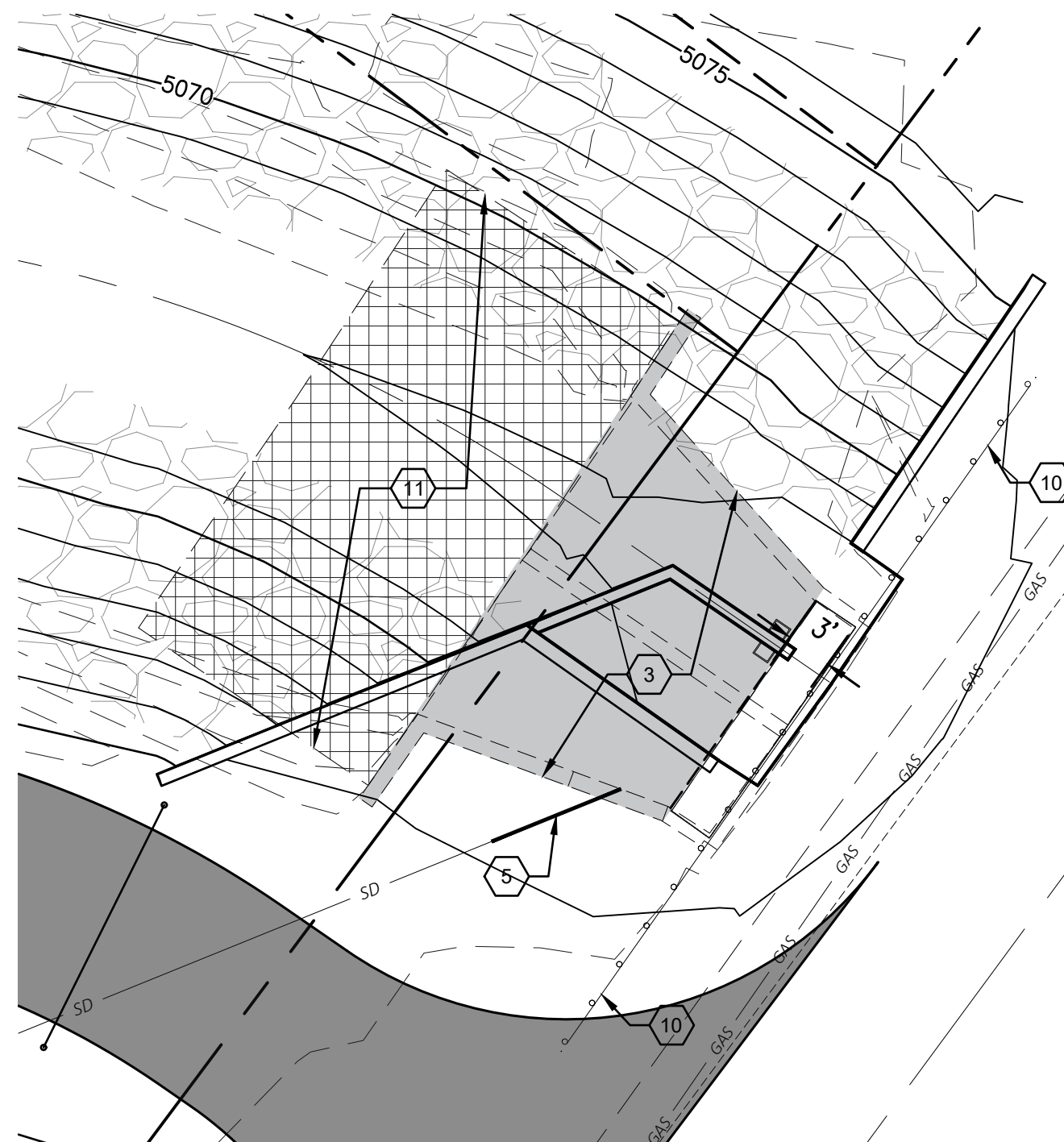
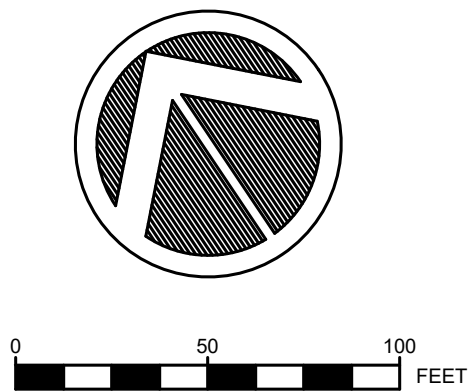
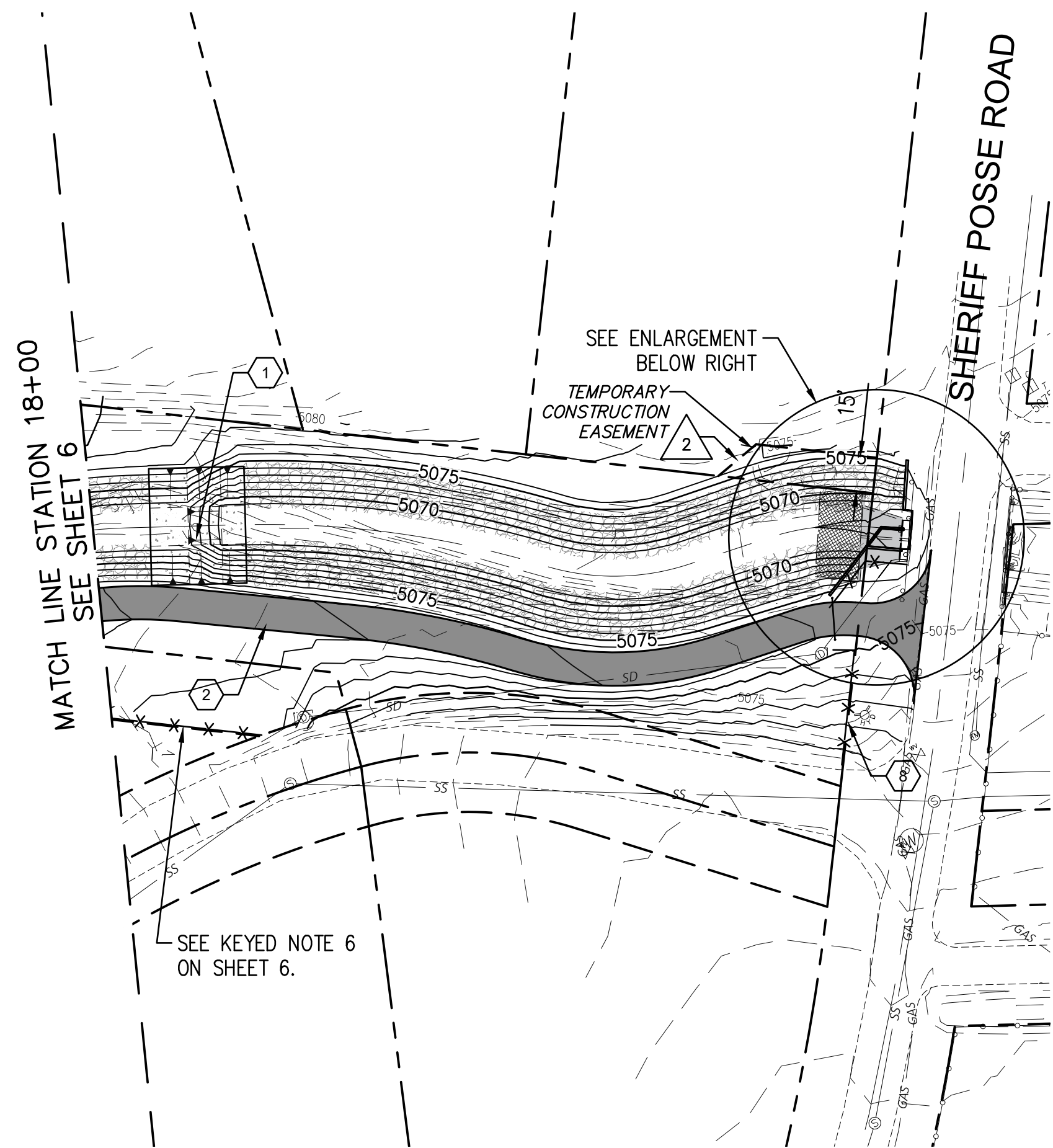
UPPER BOSQUE CHANNEL
PLAN & PROFILE STA. 18+00 - 21+48.54

REVISIONS & CHANGE NOTICES		
MARK	DESCRIPTION	DATE
2	REVISED TEMPORARY CONSTRUCTION EASEMENT.	7/07/20

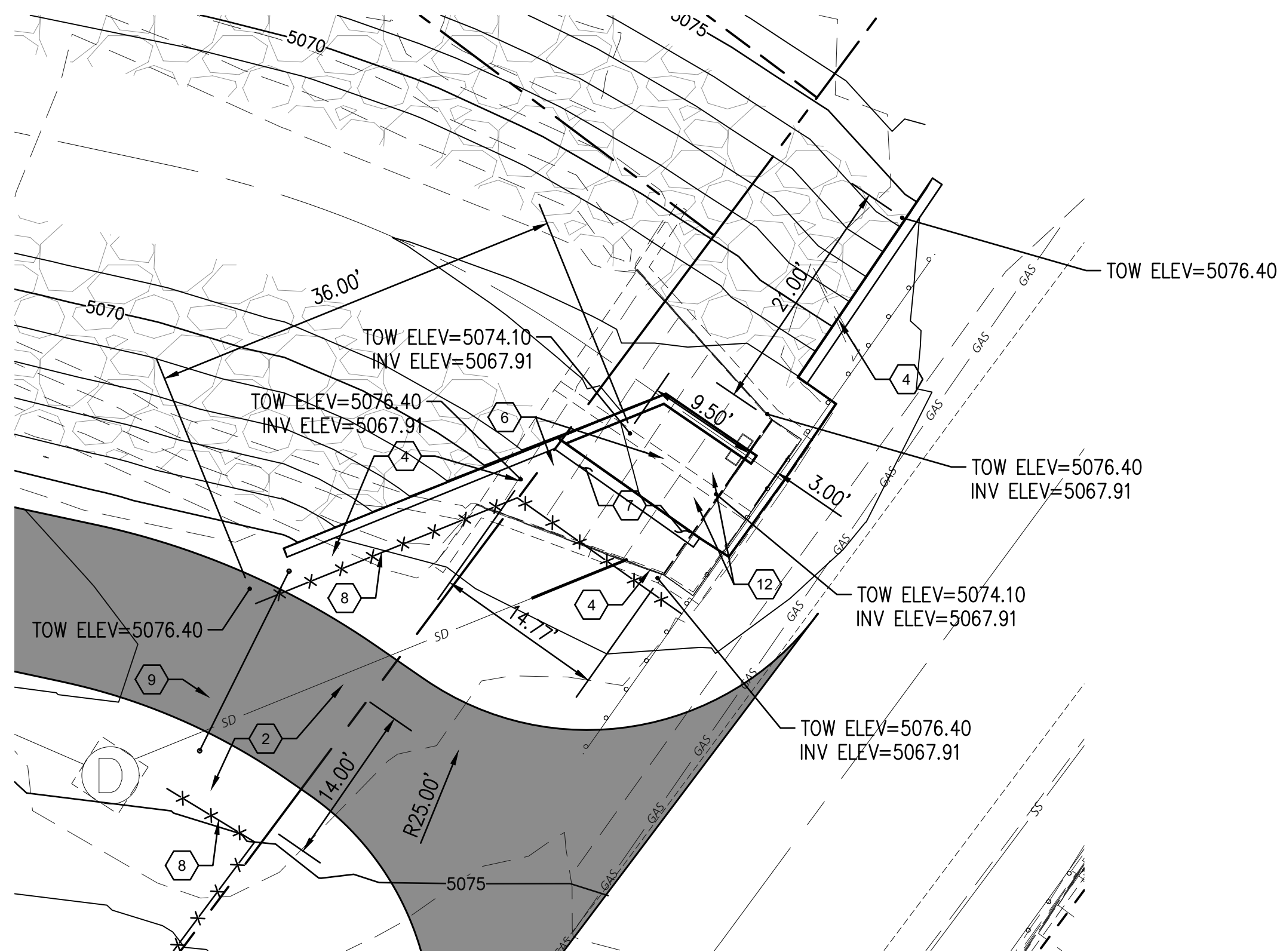
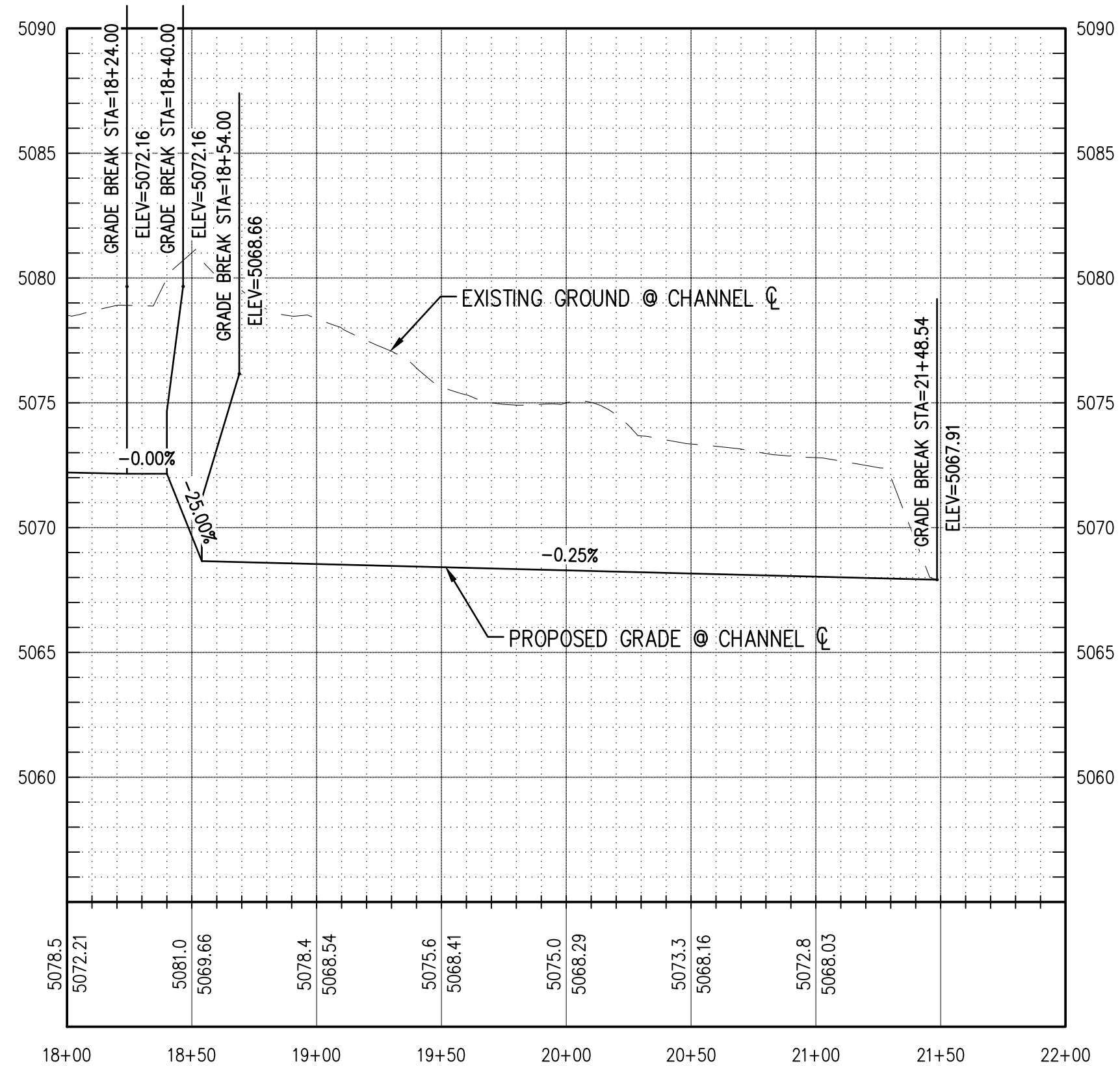
PROJECT NO: CO_P0003
DESIGNED BY: JB
DRAWN BY: KLF
CHECKED BY: AES
DATE: 7/7/2020

7

SHEET 7 OF 14



ENLARGEMENT - REMOVALS ONLY



ENLARGEMENT

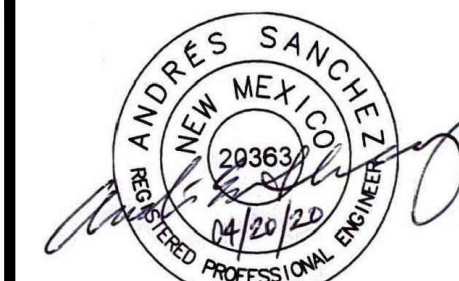
KEYED NOTES:

1. CONSTRUCT CONCRETE DROP STRUCTURE PER DETAIL 2 ON SHEET 9.
2. CONSTRUCT 14' WIDE MAINTENANCE ACCESS WITH 6" COMPACTED BASE COURSE.
3. SAWCUT, REMOVE & DISPOSE EXISTING CONCRETE STRUCTURE AND PIPE RAIL 3' FROM FACE OF EXISTING CONCRETE BOX CULVERT.
4. CONSTRUCT CANTILEVER RETAINING WALL PER NMDOT STD. DWG. 511-80-1,2&3/3, SEE SHEETS 12-14. H=10', TOW ELEV=5076.40. 12" SUBGRADE PREP REQUIRED UNDER & ON EACH SIDE OF WALL FOUNDATIONS & 12" EACH . TIE REINFORCEMENT TO EXISTING CONCRETE BOX CULVERT W/#6 DOWELS DRILL & EPOXY 8" DEEP. COORDINATE WALL DRAIN PLACEMENT & TERMINATION LOCATIONS W/ENGINEER.
5. REMOVE EXIST. 48" RCP PENETRATION TO FIRST PIPE JOINT.(APPROX. 9 LF) RE-CONNECT EXISTING 48" RCP PENETRATION IN NEW RETAINING WALL PER AMAFCA STD. DETAIL - DWG #105 SEE SHEET 11.
6. CONSTRUCT CANTILEVER RETAINING WALL PER NMDOT STD. DWG. 511-80-1,2&3/3, SEE SHEETS 12-14. H=8',TOW ELEV=5074.10. 12" SUBGRADE PREP REQUIRED UNDER & ON EACH SIDE OF WALL FOUNDATIONS. TIE REINFORCEMENT TO EXISTING CONCRETE BOX CULVERT W/#6 DOWELS DRILL & EPOXY 8" DEEP. COORDINATE WALL DRAIN PLACEMENT & TERMINATION LOCATIONS W/ENGINEER.
7. CONSTRUCT 4" CONCRETE SLAB WITH NO REINFORCEMENT AT FINISHED GRADE, INCLUDE SUBGRADE PREP & SEALED EXPANSION JOINT ALL SIDES. FF=5067.91.
8. CONSTRUCT 100± LF OF 5 STRAND WIRE FENCE PER DETAIL SHEET 10. MAINTAIN 1' CLEARANCE FROM FACE OF NEW RETAINING WALL.
9. INSTALL 16' GATE PER DETAIL SHEET 10. COORDINATE GATE SWING DIRECTION WITH ENGINEER.
10. REMOVE 50± LF EXISTING GUARDRAIL FOR CONSTRUCTION AND REPLACE.
11. REMOVE APPROX. 27 CY BURIED WIRED ENCLOSED RIPRAP.
12. INSTALL ALUMINUM STEPS EACH SIDE PER APWA DWG. 2229. SEE SHEET 8. COORDINATE WITH OWNER ON FINAL LOCATION.



**Southern Sandoval
County
Arroyo Flood Control
Authority**

1041 Commercial Dr. S.E.
Rio Rancho, New Mexico 87124
505-892-RAIN (7246)
505-892-7241 (Fax)
www.sscafca.com



UPPER BOSQUE DE BERNALILLO
FLOOD MITIGATION PROJECT

UPPER BOSQUE CHANNEL
PLAN & PROFILE STA. 18+00 - 21+48.54

REVISIONS & CHANGE NOTICES		
MARK	DESCRIPTION	DATE
2	REVISED TEMPORARY CONSTRUCTION EASEMENT.	7/07/20

PROJECT NO: CO_P0003
DESIGNED BY: JB
DRAWN BY: KLF
CHECKED BY: AES
DATE: 7/7/2020

- D. Bidder has not engaged in corrupt, fraudulent, collusive, or coercive practices in competing for the Contract. For the purposes of this Paragraph 4.01.D:
1. “corrupt practice” means the offering, giving, receiving, or soliciting of anything of value likely to influence the action of a public official in the bidding process;
 2. “fraudulent practice” means an intentional misrepresentation of facts made (a) to influence the bidding process to the detriment of Owner, (b) to establish bid prices at artificial non-competitive levels, or (c) to deprive Owner of the benefits of free and open competition;
 3. “collusive practice” means a scheme or arrangement between two or more Bidders, with or without the knowledge of Owner, a purpose of which is to establish bid prices at artificial, non-competitive levels; and
 4. “coercive practice” means harming or threatening to harm, directly or indirectly, persons or their property to influence their participation in the bidding process or affect the execution of the Contract.

ARTICLE 5 – BASIS OF BID

- 5.01 Bidder will complete the Work in accordance with the Contract Documents for the following price(s): **As shown on the attached Unit Price Bid Proposal.**

Bidder acknowledges that (1) each Bid Unit Price includes an amount considered by Bidder to be adequate to cover Contractor’s overhead and profit for each separately identified item, and (2) estimated quantities are not guaranteed, and are solely for the purpose of comparison of Bids, and final payment for all unit price Bid items will be based on actual quantities, determined as provided in the Contract Documents.

ARTICLE 6 – TIME OF COMPLETION

- 6.01 Bidder agrees that the Work will be substantially complete and will be completed and ready for final payment in accordance with Paragraph 15.06 of the General Conditions on or before the dates or within the number of calendar days indicated in the Agreement.
- 6.02 Bidder accepts the provisions of the Agreement as to liquidated damages.

ARTICLE 7 – ATTACHMENTS TO THIS BID

- 7.01 The following documents are submitted with and made a condition of this Bid:

- A. Required Bid security;
- B. List of Proposed Subcontractors;
- C. List of Proposed Suppliers;
- D. Non-Collusion Affidavit;
- E. SSCAFCA Campaign Contribution Disclosure Form;
- F. Disclosure of Lobbying Activities Form SF-LLL;**
- G. Affirmative Action/Equal Employment Opportunity Form;

Unit Price Bid Proposal **(Revised with Addendum 2)**

Bid Item Number	Item	Est'd Qty	Units	Cost/Unit	Cost
1	Project Sign, installed at locations specified by SSCAFCA, Complete	1	EA		
2	Traffic Control, Barricading, any/all access signs & permits required by Town of Bernalillo, Complete	1	LS		
3	Control of Storm Water & Nuisance Flow, CIP	1	LS		
4	Materials Testing, Complete	1	ALLOW.	\$ 15,000.00	\$ 15,000.00
5	Construction Survey/Staking, Complete	1	LS		
6	Clear & Grub, includes haul and disposal, Complete	3.5	AC		
7	Unclassified Excavation - Project Cut Quantity plus Riprap Excav., includes excavation, haul and placement/compaction on-site, Complete	7857	CY		
8	D50=6" Dumped Riprap (Type VL), incl. Subgrade Prep & Filter Fabric, Complete	1100	CY		
9	8" Reinforced Shotcrete Drop Structures	1200	SY		
10	Sawcut, Remove & Dispose of Existing CBC Inlet Structure, Complete	1	LS		
11	Structural Concrete, Class A - NMDOT Retaining Walls	60	CY		
12	Grade 60 Reinforcing Steel - NMDOT Retaining Walls	4575	LBS		
13	Drainage Aluminum Steps (Alcoa 12653A or approved equal), Complete	10	EA		

14	Subgrade Prep for Retaining Walls, 12" 95% Comp., Complete	79	SY		
15	4" PCC Slab, Complete	13	SY		
16	48" Pipe Penetration thru Retaining Wall, Complete	1	LS		
17	Subgrade Prep for Maint. Rd., 12" 95% Comp., Complete	2124	SY		
18	Aggregate Base Course, Maint. Rd., 6" at 95% Comp., Complete	2124	SY		
19	Barbless Wire Fence, Incl. Posts, Complete	561	LF		
20	8" Reinforced Shotcrete Maintenance Access Ramp	138.5	SY		
21	Pipe Gate, 16' Wide, Complete	1	EA		
22	Native Grass Seeding, All Disturbed Areas, Complete	1.9	AC		
23	NPDES & SWPPP, Complete	1	LS		
24	Guardrail Removal & Replacement, Complete	1	LS		
SUBTOTAL					

25	Mobilization, Complete	1	NTE	Not to Exceed 5% of Subtotal	
----	------------------------	---	-----	------------------------------------	--

BASE BID SUBTOTAL Items 1-25					
-------------------------------------	--	--	--	--	--

MANDATORY: PLEASE FILL OUT BLANKS BELOW

- Bidder has registered at SAM.gov (initial to acknowledge): _____
- DUNS Number for Prime Contractor: _____
- Bidder acknowledges Federal Funding for this project (initial to acknowledge): _____