

SOUTHERN SANDOVAL COUNTY ARROYO FLOOD CONTROL AUTHORITY

10th STREET S.E. DRAINAGE IMPROVEMENT PLANS CITY OF RIO RANCHO SANDOVAL COUNTY, NEW MEXICO



**Southern Sandoval
County
Arroyo Flood Control
Authority**
1041 Commercial Dr. S.E.
Rio Rancho, New Mexico 87124
505-892-RAIN (7246)
505-892-7241 (Fax)
www.sscafca.com

REVISIONS & CHANGE NOTICES		
NO.	DESCRIPTION	DATE

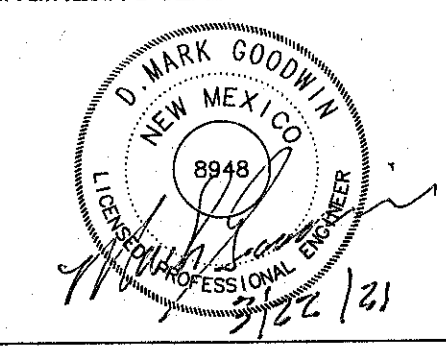
OWNER/DEVELOPER
LD DEVELOPMENT, LLC

dmg
MARK GOODWIN & ASSOCIATES, P.A.
P.O. BOX 80808
ALBUQUERQUE, NEW MEXICO 87199
(505)265-1200, FAX (505)797-9339

SSCAFCA
10TH STREET DRAINAGE IMPROVEMENTS

COVER SHEET

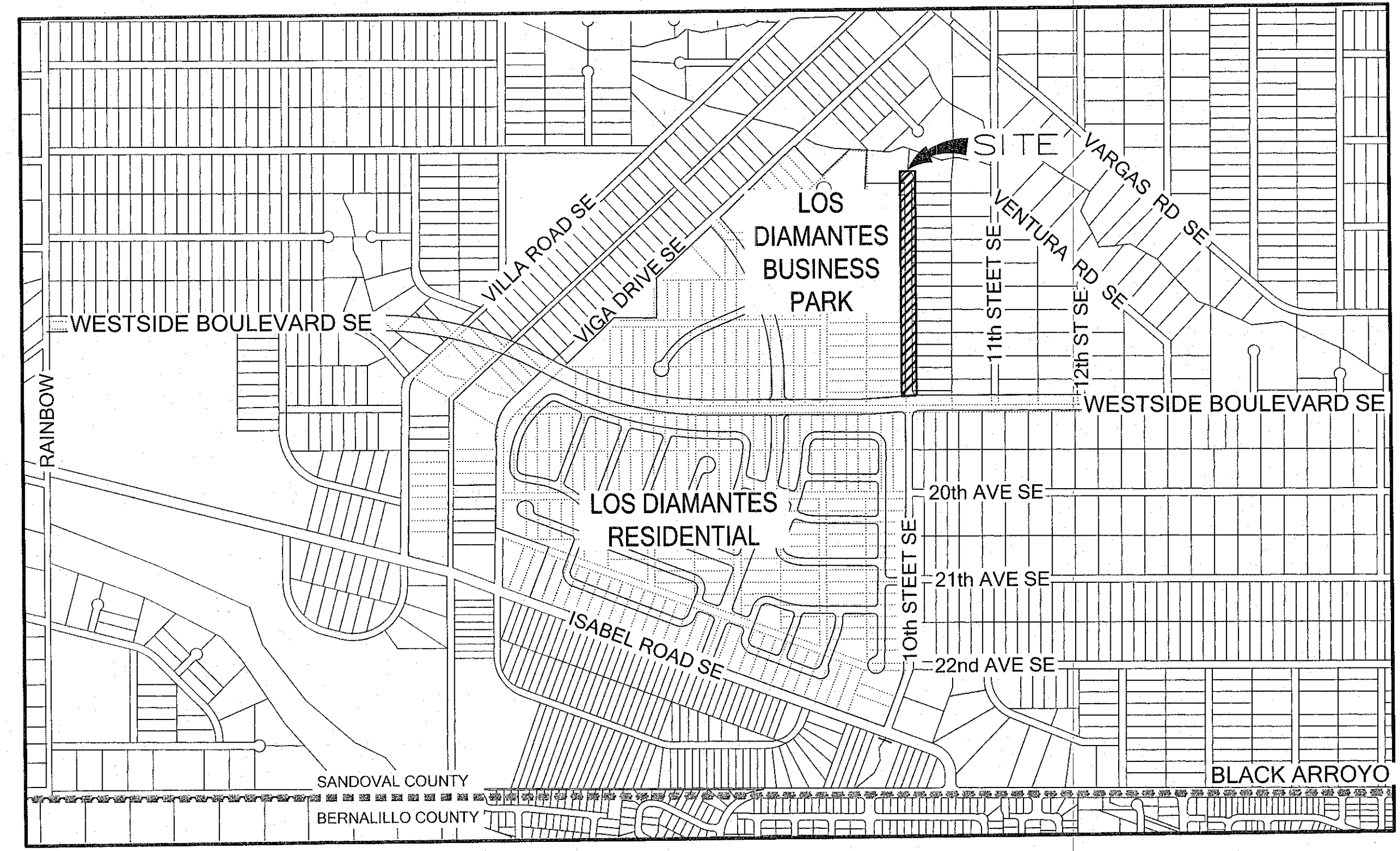
ENGINEER'S SEAL



PROJECT NO. A21003
DESIGNED BY: HLC
DRAWN BY: CM
CHECKED BY: DMG
DATE: Mar-21

SHEET: 1
SHEET 1 OF 8

- SHEET INDEX:
- 1 COVER SHEET
 - 2 STANDARD NOTES
 - 3 STANDARD ABBREVIATIONS
- GRADING PLANS
- 4 EROSION CONTROL PLAN
- UTILITY PLANS
- 5 MASTER UTILITY PLAN
 - 6-7 UTILITY PLAN & PROFILES
 - 8 UTILITY DETAILS



VICINITY MAP

DEVELOPER: LD DEVELOPMENT, LLC DATE: 3-22-21

CITY OF RIO RANCHO: DEVELOPMENT SERVICES DATE: _____

SSCAFCA: EXECUTIVE ENGINEER DATE: _____

CAUTION:
NOTE THAT ALL EXISTING UTILITIES MAY NOT BE SHOWN. ALL EXISTING SERVICE CONNECTIONS ARE NOT SHOWN. ANY EXISTING UTILITIES THAT ARE SHOWN ARE APPROXIMATE LOCATION ONLY. IT SHALL BE THE SOLE RESPONSIBILITY OF THE CONTRACTOR TO CONTACT ALL THE UTILITY OWNERS AND TO CONDUCT ALL NECESSARY FIELD INVESTIGATIONS PRIOR TO ANY EXCAVATIONS TO DETERMINE THE ACTUAL LOCATION OF UTILITIES AND OTHER IMPROVEMENTS.

GENERAL NOTES

1. All construction shall be performed in accordance with 1) the project construction plans, 2) the project specifications, 3) the current edition of the City of Rio Rancho standard details, 4) the current edition of the NMDOT Standard Specifications for Highway and Bridge Construction, and 5) the New Mexico Standard Specifications for Public Works Construction and details, as prepared by the New Mexico Chapter, American Public Works Association and addendum. In the case of conflicting specifications, the City of Rio Rancho/SSCAFCA will determine which specification governs.
2. The Contractor agrees to assume the sole and complete responsibility for the job site conditions during the course of construction of the project, including safety of all persons and property. This requirement shall apply continuously and not be limited to normal working hours, and the Contractor shall defend, indemnify and hold the City and Engineer harmless from any and all liability, real or alleged, in connection with the performance of the work on this project, except for liability arising from the sole negligence of the City or Engineer.
3. No modifications to these plans shall be made without the written consent of the City/SSCAFCA, Engineer, and all approval signatories. The Engineer shall not be responsible for construction methods or techniques or for the prosecution of the work as shown on these plans. The Engineer shall not be held responsible for the acts or omissions of the Contractor, Subcontractors, or other persons performing any work, as shown in the project Contract Documents.
4. A Right-of-Way Use Permit and Traffic Control Plan (TCP) are required for all work performed within the public Right-of-Way. Provisions contained within Chapter 96 of the City of Rio Rancho Municipal Code shall govern. All construction signing, barricading, and channelization devices shall conform to the latest edition of the Manual on Uniform Traffic Control Devices (MUTCD). The Contractor is responsible for the setup and maintenance of all traffic control devices. Any modifications to the approved traffic control plan must be approved by the City/SSCAFCA prior to any changes being implemented. A Traffic Control Supervisor must be available for the duration of the project 24 hours a day and seven days a week. Access to residents and businesses must be maintained at all times.
5. The Contractor shall designate at least one emergency contact person, and shall provide telephone numbers where this person can be contacted at any time. This information shall be provided to the City/SSCAFCA Project Manager.
6. The Contractor is responsible for obtaining all necessary permits from all jurisdictional authorities before the start of construction.
7. All work on this project shall be performed in accordance with applicable federal, state, and local laws, rules and regulations concerning construction safety, health, and environmental protection.
8. Existing site improvements which are damaged or displaced by the Contractor shall be removed and replaced by the Contractor at the Contractor's own expense. The work shall be approved by the City/SSCAFCA before construction of the repairs. Repairs must be accepted by the City/SSCAFCA before final payment.
9. The Contractor shall only utilize the designated staging areas for storage of all equipment and materials. The City/SSCAFCA assumes no responsibility or liability for the Contractor's equipment and material in the staging area. Security shall be the sole responsibility of the Contractor. If no staging area is designated on these plans, an offsite staging area shall be provided by the Contractor at the Contractor's expense, or the Contractor may negotiate with the City/SSCAFCA to use an onsite area.
10. Unless otherwise noted, all roadway stationing is along the centerline of the roadway right-of-way.
11. Unless otherwise noted, stationing of channels and/or pipes in drainage easements is along the centerline of the channel/pipe.
12. The Contractor shall be responsible for determining, in advance of their construction operations, if overhead utility lines, support structures, poles, guys, etc., are an obstruction to construction operations. If any obstruction is evident, the Contractor shall be responsible for coordinating with the appropriate utility owner to remove or support the utility obstruction. All costs for these requirements are incidental to the Contract.
13. Facilities which are not specifically located with actual vertical and horizontal controls on the construction documents, are shown approximate and in accordance with the best available information provided by various owners of the facilities, and supplemented by visual surface information where appropriate. Accuracy, location, and completeness of this information is the sole responsibility of the Contractor and should be verified, by any means necessary, before the initiation of construction. Should a conflict exist, the Contractor shall notify the City/SSCAFCA, Engineer, and the City/SSCAFCA Project Manager immediately.
14. It is mandatory that a preconstruction meeting be held before commencing construction. The Contractor is responsible for contacting the City/SSCAFCA Project Manager to determine the time and location of the preconstruction meeting.
15. At the preconstruction meeting, the Contractor shall submit a detailed construction schedule to the City/SSCAFCA Project Manager. The schedule will be updated on a monthly basis and submitted with the monthly invoice.
16. Any work performed without the approval of the City of Rio Rancho/SSCAFCA and/or all work and materials not in conformance with the specifications is subject to removal and replacement at the Contractor's expense.
17. The Contractor shall contact NM 811 at 1-800-321-2537 for utility spots in accordance with applicable state law.
18. The Contractor shall confine their work to within the construction limits and/or public right-of-way to preserve existing vegetation, landscaping, and private property. Approval of these plans does not give or imply any permission to trespass or work on private property. Permission must be granted in writing by the Owner of that property.
19. It is the sole responsibility of the Contractor to keep the job site free from trash on a daily basis, and all materials will be neatly organized. Trash and/or non-used materials shall not be buried onsite.
20. The Contractor shall park equipment and vehicles so as not to interfere with normal activities of residents, other Contractors, or Emergency Services.
21. The Contractor will provide construction standard utilizing approved construction plans, the appropriate Right-of-Way maps, recorded plats, and City of Rio Rancho standard details. Each revision to the plans shall be recorded in the plan revision block. Plans shall include a location map with legal description(s) and location grid.
22. The Contractor shall maintain an up-to-date and accurate set of Working Record Drawings, redlined drawings, in accordance with the City of Rio Rancho's Development Process Manual (DPM) Chapter II.7. These Working Record Drawings shall reflect all approved changes to the original plans throughout the construction process. At the completion of construction, the Contractor shall submit the Working Record Drawings as outlined in the City of Rio Rancho's DPM Chapter II.7. Also, the Contractor shall ensure that all submittals, permitting, and construction activities are in accordance with the City of Rio Rancho's DPM and applicable ordinances. All costs for these requirements are incidental to the Contract.
23. No work shall be performed in a floodplain without written authorization from the City's Floodplain Manager.
24. Any work performed in a drainage way, channel, arroyo, or floodplain must be protected by the means identified in the Temporary Erosion Control and Sediment plans accepted by the City/SSCAFCA.
25. Vibration monitoring will be at the Contractor's discretion and incidental to the Contract.

SOILS

1. Unless otherwise specified subgrade soils and structural fill materials shall be compacted to the following percentages of the ASTM D-1557 maximum density.

MATERIALS	PERCENT (%) COMPACTION
STRUCTURAL FILL IN THE BUILDING AREA	95
SUB BASE FOR SLAB SUPPORT	95
MISCELLANEOUS BACKFILL BELOW STRUCTURAL FILL OR ROAD	95
MISCELLANEOUS BACKFILL BELOW UNPAVED, NON-BUILDING AREAS	90
ROAD SUB GRADE	95
SIDEWALK SUB GRADE	95
CURB AND GUTTER SUBGRADE	95
ARROYOS	90

ROADWAY GENERAL NOTES

1. No paving construction activities shall be started until all underground utilities within the roadway are completed, tested, and approved. All water valve boxes and electrical, telephone, television, and sewer manholes in the construction area shall be adjusted to finished grade.
2. All signs, barricades, channelization devices, pavement markings, sign frames and erection of such devices shall conform to the requirements of the "Manual on Uniform Traffic Control Devices for streets and highways" (MUTCD), current edition.
3. All street striping altered or destroyed during construction shall be replaced by the Contractor to match the original conditions (i.e. type, spacing) at the location prior to construction, or as shown in this plan set.
4. Street grades shall be restored by the Contractor to the existing grades unless otherwise directed by the City of Rio Rancho. Smooth transitions shall be made between existing pavement which remains in place and pavement which is replaced. When abutting new pavement to existing, saw cut back existing pavement to a neat, straight line as required to remove any broken or cracked pavement. Refer to standard drawing PS-02.
5. The location of all valves and manholes must be referenced at all times by the Contractor during construction and made accessible daily upon completion of all paving activities.

EROSION CONTROL/ENVIRONMENTAL PROTECTION/STORM WATER POLLUTION PREVENTION PLAN

1. The Contractor shall be responsible for fulfilling all necessary National Pollutant Discharge Elimination System (NPDES) requirements including, but not limited to, obtaining an NPDES permit before construction, filling out the Notice of Intent (NOI) application, and filling out the Notice of Termination (NOT) application. The Contractor shall also be responsible for the implementation of and inspection reports for the Storm Water Pollution Prevention Plan (SWPPP). The Contractor shall submit the SWPPP with the proposed construction staging area and temporary sanitary facilities clearly shown. Any check dams, silt fences, or other Best Management Practices (BMP) that are required in the approved SWPPP shall be included in and are incidental to the SWPPP bid amount.
2. The Contractor is required to keep a current copy of the SWPPP at the construction site or at an easily accessible location so that it can be made available at the time of an onsite inspection or upon request by the EPA; a state, tribal, or local agency approving storm water management plans; the operator of a storm sewer system receiving discharges from the site; or representatives of the U.S. Fish and Wildlife Service (USFWS) or the National Marine Fisheries Service (NMFS).
3. The Contractor shall conform to all City, County, State and Federal dust and erosion control regulations. The Contractor shall prepare and obtain any necessary dust or erosion control permits from the regulatory agencies.
4. The Contractor shall either promptly remove any material excavated within the public Right-of-Way or install BMPs according to NPDES requirements to prevent discharge of excavated material within the public Right-of-Way during a rain or wind event. All costs for these requirements are incidental to the Contract.
5. The Contractor shall implement the approved SWPPP and ensure that no soil erodes from the site into public Right-of-Way or onto private property.
6. The Contractor shall mitigate erosion of temporary or permanent dirt swales by installing BMPs identified in the approved SWPPP in the swales perpendicular to the direction of flow, and at intervals as specified in the SWPPP.
7. Construction areas shall be watered for dust control in compliance with government ordinances. The Contractor shall be responsible for locating and supplying water as required. Watering, as required for construction and dust control, shall be considered incidental to construction and no measurement or payment shall be made therefore.
8. Any areas disturbed by construction and not covered by landscaping or an impervious surface shall be re-vegetated with native grass seeding. When construction activities cease and earth disturbing activities will not resume within 14 days, stabilization measures must be initiated. Unless indicated otherwise on these plans or on the landscaping plan, native grass seeding shall be in accordance with Section 1012 of the New Mexico Standard Specifications for Public Works Construction, APWA NM Chapter, current edition.
9. All waste products from the construction site, including items designated for removal, construction waste, construction equipment waste products (oil, gas, tires, etc.) garbage, grubbing, excess cut material, vegetative debris, etc. shall be appropriately disposed of offsite at no additional cost to the City. It shall be the Contractor's responsibility to obtain permits required to haul or dispose of waste products. It shall be the Contractor's responsibility to ensure that the waste disposal site complies with government regulations regarding the environment, endangered species, and archaeological resources.
10. The Contractor shall be responsible for the cleanup and reporting of spills of hazardous materials associated with the construction site. Hazardous materials include gasoline, diesel fuel, motor oil, solvents, chemicals, paints, etc. which may be a threat to the environment. The Contractor shall report the discovery of past or present spills to the New Mexico Environment Department Emergency Response Team at (505) 827-9329.
11. The Contractor shall comply with all applicable regulations concerning surface and underground water. Contact with surface water by construction equipment and personnel shall be minimized. Equipment maintenance and refueling operations shall be performed in an environmentally safe manner in compliance with government regulations.
12. Where storm inlets are susceptible to inflow of silt or debris from construction activities, protection shall be provided on their upstream side utilizing BMPs according to NPDES requirements. All costs for these requirements are incidental to the Contract.
13. Storm Water Pollution Prevention Plans (SWPPP) and accompanying Federal EPA Administrative Procedures shall meet the City of Rio Rancho guidelines and procedures outlined in the current addition of the New Mexico State Highway and Transportation Department Storm Water Management Guidelines for Construction and Industrial Activities Manual.
14. The Contractor shall provide adequate means for cleaning trucks and/or other equipment of mud before entering public streets. It is the Contractor's responsibility to clean streets and take whatever measures are necessary to ensure that all roads are maintained in a clean, mud and dust-free condition at all times.
15. No work may begin in a an arroyo or other drainage way until authorization has been provided by the U.S. Army Corp. of Engineers and the City of Rio Rancho Flood Plain Manager.

WATER GENERAL NOTES

1. For water connections to existing lines, the Contractor shall notify the City's Project Manager a minimum of 48 hours before the connection.
2. Compression joints may be used on copper service lines. Flared joints shall be used when connecting to plastic lines.
3. Valve boxes shall be brought to surface elevation upon completion of the surface course of pavement. Concrete collars shall be constructed to surface elevations.
4. Flushing of water lines shall be metered and reported to the City's Project Manager on a weekly basis. Preference for disposal is (1) on available land surface or (2) in storm sewers. Disposal methods shall be discussed with the City's Project Manager.
5. Flushing, disinfection and testing of water lines shall be coordinated with the City's Project Manager.
6. It will be the Contractor's sole responsibility to protect and maintain, in service, all existing utilities. The Contractor shall adequately support and protect existing utilities affected by the Contractor's trenching activity. In the event that existing utilities are damaged by the Contractor's operations, the Contractor shall arrange for and coordinate prompt repair by the respective utility and shall bear the cost of the repairs.
7. All water lines must have tracer wire and marker balls per City of Rio Rancho standard drawings.
8. The City of Rio Rancho shall approve material submittals before construction.
9. Before any water line installation, the following conditions will occur:
- a) The water line route will be cleared and grubbed and then graded to plan elevation
- b) The water line will be staked when outside an area with curb and gutter.
10. The City of Rio Rancho Utilities Operations Division shall be the only personnel authorized to operate existing valves, fire hydrants, etc. for construction purposes. All shutoffs must be coordinated with the City's Project Manager seven (7) days before proposed shutoff and shall comply with the accepted shutoff plan.
11. The Contractor is responsible for testing of all lines, including but not limited to, hydrostatic and bacteria testing, disinfecting, and flushing. The Contractor is responsible for the testing of the water line system before acceptance by the City. Testing shall be performed to demonstrate the functionality of the system. All costs for these requirements are incidental to the Contract.
12. For non-hot tap water connections to existing lines, the Contractor shall prepare and submit to the City's Project Manager, for acceptance, a water shutoff plan 48 hours before the connection is to take place.
13. The Contractor shall mark the top of the curb with a "W" for water lines following service installations and before final acceptance.

WASTEWATER GENERAL NOTES

1. Sewer/Water lines shall be placed in separate trenches at a distance of 15 feet typically or a minimum of 10 feet apart horizontally. The water line shall be placed a minimum of 1.5 feet higher in elevation than the sewer line. At all crossings of water and sewer lines, the water line shall be a minimum of 1.5 feet higher than the sewer line or the sewer line shall be C-900 pressurized pipe.
2. It will be the Contractor's sole responsibility to protect and maintain in service all existing utilities. The Contractor shall adequately support and protect existing utilities affected by the Contractor's trenching activity. In the event that existing utilities are damaged by the Contractor's operations, the Contractor shall arrange for and coordinate with the Project Manager, prompt repair by the respective utility and shall bear the cost of the repairs.
3. The City of Rio Rancho shall approve material submittals before construction.
4. Prior to the sewer line installation, the following conditions will occur:
- a) The sewer line route will be cleared and grubbed and then graded to plan elevation
- b) The sewer line will be staked when outside an area with curb and gutter
5. All forcemain sewer lines must have marker balls per the City of Rio Rancho standard drawings. Tracer wire shall be installed if required by the City's Project Manager.
6. The City of Rio Rancho Utilities Operations Division shall be the only personnel authorized to operate existing valves, etc. for construction purposes. All shutoffs must be coordinated with the City's Project Manager seven (7) days before to proposed shutoff and shall comply with the accepted shutoff plan.
7. 30 days following installation and backfill of sewer lines, a deflection test using a hand pulled mandrel shall be performed in the presence of the City's Inspector. All costs for these requirements are incidental to the Contract.
8. Air testing of sewer lines and hydrostatic testing of force mains shall be conducted in the presence of the City's Inspector. All costs for these requirements are incidental to the Contract.
9. All sewer service lines shall be inspected by TV camera and videoed then provided to the City's Inspector for review before acceptance by the City. In the event that the first inspection or subsequent inspections after that do not pass, the Contractor will be required to perform additional inspections of the sewer service lines using a TV camera at the Contractor's expense.
10. Manholes shall meet the City of Rio Rancho standards except that there shall be no ladder rungs installed.
11. The Contractor is responsible for testing of all force main lines, including but not limited to hydrostatic and bacteria testing, disinfecting, and flushing. All costs for these requirements are incidental to the Contract.
12. If bypass pumping is required, then a bypass pumping plan must be submitted to the City's Project Manager, for acceptance, seven (7) days before bypass pumping begins.
13. The Contractor shall mark the top of the curb and pan of the gutter with "S" for sanitary sewer following service installation and before final acceptance.
14. Manholes shall be raised to surface course of pavement. Circular concrete collars shall be constructed to surface elevation.
15. No bricks shall be used to adjust manholes to finished grade.

ADA GENERAL NOTES

1. These drawings provide guidance for compliance with the current public right of way accessibility guidelines (PROWAG). These standards shall apply to all new and altered sidewalks.
2. Surfaces shall be stable, firm, and slip resistant. Sidewalk and curb ramp surfaces shall provide consistent slopes within each section.
3. All street striping altered or destroyed during construction shall be replaced by the Contractor to All broom finishes shall be perpendicular to the direction of pedestrian travel.
4. A vertical change of 1/4 inch (6mm) or less is allowed. If between 1/4 inch and 1/2 inch (6mm and 13mm), then it needs to be beveled 2:1. Changes greater than 1/2 inch shall be ramped.
5. Openings or cracks in sidewalk surfaces shall not exceed 1/2 inch (13mm). Elongated openings should be placed so that the long dimension is perpendicular or diagonal to the dominant direction of travel.
6. The least possible curb ramp slope shall be used. Curb ramps running slope shall not exceed 12:1. Where existing terrain is steep, curb ramps shall not exceed 15 feet in length.
7. Provide a flush transition between curb ramps, sidewalks, gutter, and edge of pavement, free of drainage lip, abrupt grade changes, drop-offs, or any surface irregularities. A 5% (20:1) or flatter transition taper shall be provided from the street to the gutter for curb ramps locations (this may require special treatment of the edge of OGFC) when diagonal (not in line with crosswalks) curb ramps are necessary. A 2% (50:1) transition or "lower landing" shall be provided. The gutter running slope (flow line) shall not exceed 2:1 measured along the bottom of the curb ramp.
8. Curb ramps shall be located to provide the most direct route of travel across the traffic lanes.
9. Two directional (in line with the crosswalks) curb ramps per corner are used in order to provide short and direct crossings for the user.
10. Sign posts, utility poles, fire hydrants, traffic signals standards, light poles, pull boxes, meters, valves, etc., shall not be located in the curb ramp including side flares and landings.
11. In order to better accommodate conditions in the field, the contractor shall obtain final approval of curb ramp locations from the project manager and the city manager and the city traffic engineer. When necessitated by existing physical conditions. Alternate curb ramps must be submitted to the project manager for approval by the city traffic engineer.
12. Landings shall be a minimum of 48" x 48". Slopes shall not exceed 2% (50:1) in all directions.
13. Detectable warnings are required at all street intersections, signalized driveways, commercial driveways 30' wide or greater, and marked mid-block crosswalks.
14. Concrete Procedural note: Before scheduling delivery of concrete, contractor shall meet with City Inspector/PM to ensure the concrete formwork is constructed to dimensions and grades shown on plans and meets PROWAG, 2011 Technical Design Criteria. Calibrate 24" electronic digital level with Contractor's electronic digital level prior to verifying measurements. Verify measurements meet requirements or require correction of all discrepancies before scheduling of concrete to ensure the finished concrete will meet PROWAG. When all measurements meet requirements then the inspector shall permit concrete pour. Repeat the procedure after concrete pour to ensure the curb ramp meets PROWAG compliance. Final acceptance of a curb ramp does not occur until the final inspection of the project. This procedure shall be considered incidental to the installation of the ADA curb ramps.
15. The contractor shall submit a proposed work plan for pedestrian improvements to the project engineer for review and approval prior to initiating this work. This plan shall include the method proposed to maintain pedestrian access to businesses, schools, hospitals, buildings, etc. throughout the pedestrian improvements construction in particular. The contractor, at minimum, shall maintain a 48" clear path for pedestrians so as to meet ADA accessibility requirements. All temporary pedestrian facilities implemented during construction shall comply with ADA standards.
16. Sidewalk and curb ramp cross slope is recommended to be constructed for a cross slope of 1.5% typical, but shall not exceed 2.0% cross slope on the pedestrian access route.



Southern Sandoval
County
Arroyo Flood Control
Authority

1041 Commercial Dr. S.E.
Rio Rancho, New Mexico 87124
505-892-RAIN (7246)
505-892-7241 (Fax)
www.sscafca.com

REVISIONS & CHANGE NOTICES		
NO.	DESCRIPTION	DATE

OWNER/DEVELOPER
LD DEVELOPMENT, LLC

dmg
MARK GOODWIN & ASSOCIATES, P.A.
CONSULTING ENGINEERS
P.O. BOX 90608
ALBUQUERQUE, NEW MEXICO 87199
(505) 263-2800, FAX (505) 263-2809

SSCAFCA
10TH STREET DRAINAGE IMPROVEMENTS

STANDARD NOTES

ENGINEER'S SEAL



PROJECT NO.	A21003
DESIGNED BY:	HLC
DRAWN BY:	CM
CHECKED BY:	DMG
DATE:	Mar-21

SHEET:

2

SHEET 2 OF 8

ABBREVIATIONS

AP	ANALYSIS POINT
@	AT
BC	BEGIN CURVE
BCR	BEGIN CURB RETURN
BK	BOOK
BLDG	BUILDING
BM	BENCH MARK
BOP	BEGINNING OF PROJECT
BVC	BEGIN VERTICAL CURVE
BW	BASE OF WALL
CATV	CABLE TV LINE
CB	CATCH BASIN
CF	CURB FACE
CG	CURB AND GUTTER
CL	CHAIN LINK
C	CENTERLINE
CMP	CORRUGATED METAL PIPE
CO	CLEAN OUT
CONC	CONCRETE
CORR	CITY OF RIO RANCHO
CY	CUBIC YARDS
DUE	DRAINAGE UTILITY EASEMENT
DI	DROP INLET
DIA	DIAMETER
Δ	DELTA
EA	EACH
EC	END CURVE
ECR	END CURB RETURN
ELEV	ELEVATION
EOP	END OF PROJECT
EP	EDGE OF PAVEMENT
ESMT	EASEMENT
EVC	END VERTICAL CURVE
EW	EACH WAY
EXIST	EXISTING
FF	FINISH FLOOR
FG	FINISH GRADE
FH	FIRE HYDRANT
FL	FLOW LINE
FOC	FACE OF CURB
FP	FINISHED PAD
G	GAS
GM	GAS METER
GV	GATE VALVE
HORIZ	HORIZONTAL
INT	INTERSECTION
INV	INVERT
INV EL	INVERT ELEVATION
LF	LINEAR FEET
LP	LIGHT POLE
LT	LEFT
MH	MANHOLE
NG	NATURAL GROUND
OC	ON CENTER
PB	PULL BOX
PC	POINT OF CURVATURE
PCC	POINT OF COMPOUND CURVATURE
PG	PAGE
PGL	PROFILE GRADE LINE PER TYPICAL SECTION
PI	POINT OF INTERSECTION
PL	PROPERTY LINE
PRC	POINT OF REVERSE CURVATURE
PT	POINT OF TANGENCY
PUE	PUBLIC UTILITY EASEMENT
PVC	POLYVINYL CHLORIDE PIPE
PVMT	PAVEMENT
RAD	RADIUS
RCP	REINFORCED CONCRETE PIPE
RD	ROOF DRAIN
REF	REFERENCE
RT	RIGHT
R/W, ROW	RIGHT-OF-WAY
S	SLOPE
SAS	SANITARY SEWER LINE
SD	STORM DRAIN
SF	SQUARE FEET
STA	STATION
STD	STANDARD
SW	SIDEWALK
SY	SQUARE YARDS
T	TANGENT
TA	TOP OF ASPHALT
TAC	TOP OF ASPHALT CURB
TBC	TOP BACK OF CURB
TC	TOP OF CONCRETE
TEL	TELEPHONE LINE, RISER OR BOX
TP	TOP OF PIPE
TRANS	TRANSVERSE
TW	TOP OF WALL
TYP	TYPICAL
UE	UNDERGROUND ELECTRICAL LINE
UT	UNDERGROUND TELEPHONE LINE
VC	VERTICAL CURVE
VERT	VERTICAL
VPI	VERTICAL POINT OF INTERSECTION
W	WATERLINE
WM	WATER METER
WSEL	WATER SURFACE ELEVATION
WV	WATER VALVE

PAVING LEGEND

	NEW MOUNTABLE CURB AND GUTTER
	NEW STANDARD CURB AND GUTTER
	NEW DEPRESSED MOUNTABLE CURB AND GUTTER
	NEW DEPRESSED STANDARD CURB AND GUTTER
	FUTURE MOUNTABLE CURB AND GUTTER
	FUTURE STANDARD CURB AND GUTTER
	SIDEWALK THIS PROJECT
	DEFERRED SIDEWALK
	LOT LINE
	RIGHT-OF-WAY LINE
	CENTERLINE
	EASEMENT LINE
	NEW RETAINING WALL
	STORM DRAIN INLET THIS PROJECT
	PROPOSED STREET LIGHT - 250W HPS, NMDOT TYPE V, POWDER COATED TAN
	EXISTING STREET LIGHT - 250W HPS, NMDOT TYPE V, POWDER COATED TAN
	BY OTHERS STREET LIGHT - 250W HPS, NMDOT TYPE V, POWDER COATED TAN
	50' CROWN TRANSITION PER DWG 2401
	25' HALF CROWN TRANSITION PER DWG 2401
	WHEEL CHAIR RAMP W/TRUNCATED DOMES
	EXISTING CURB & GUTTER
	EXISTING PAVEMENT
	EXISTING STORM INLET

UTILITY LEGEND

	EXISTING CURB & GUTTER
	EXISTING TRANSFORMER
	EXISTING ELECTRIC CABINET
	EXISTING TRAFFIC MAST
	EXISTING SIGNAL BOX
	EXISTING TELEPHONE MANHOLE
	EXISTING FENCE
	EXISTING UTILITY PEDESTAL
	EXISTING SANITARY SEWER MANHOLE
	EXISTING SANITARY SEWER LINE
	EXISTING SANITARY SEWER SERVICE
	EXISTING UNDERGROUND FIBER OPTIC LINE
	EXISTING UNDERGROUND WATER LINE
	EXISTING WATER VALVE
	EXISTING FIRE HYDRANT
	EXISTING STORM DRAIN LINE
	EXISTING STORM DRAIN MANHOLE
	EXISTING STORM DRAIN INLET
	EASEMENT LINE
	NEW CENTERLINE
	NEW STORM DRAIN
	NEW STORM DRAIN INLET
	NEW STORM DRAIN MANHOLE
	NEW SANITARY SEWER LINE
	NEW SANITARY SEWER MANHOLE
	NEW SANITARY SEWER SERVICE LINE
	NEW WATERLINE
	NEW WATERLINE CROSS
	NEW WATERLINE TEE
	NEW WATERLINE OR SAS CAP
	NEW WATERLINE BEND
	NEW FIRE HYDRANT
	NEW GATE VALVE & BOX
	NEW WATER METER SERVICES
	NEW IRRIGATION SERVICE

PROJECT SPECIFIC GENERAL NOTES:

- CONTRACTOR IS RESPONSIBLE FOR ALL CONSTRUCTION SURVEY AND STAKING. CONTRACTOR IS RESPONSIBLE FOR HIRING AND COORDINATING WITH A NEW MEXICO LICENSED PROFESSIONAL SURVEYOR TO PROVIDED SURVEYS OF ALL CONFLICTING UTILITIES DURING CONSTRUCTION AND TO PROVIDE AS-BUILT RECORD DRAWINGS.
- THE CONTRACTOR SHALL NOT STOCKPILE EARTHWORK AND/OR MATERIALS ON PRIVATE PROPERTY WITHOUT THE OWNER'S WRITTEN PERMISSION.
- THE CONTRACTOR SHALL OBTAIN NPDES PERMIT AND SHALL BE RESPONSIBLE FOR CONSTRUCTING AND MAINTAIN CONSTRUCTION EROSION CONTROLS. THE CONTRACTOR SHALL HIRE A PRIVATE CONSULTANT TO PROVIDE AN INITIAL SWPPP TO BE MAINTAINED AND UPDATED BY THE CONTRACTOR DURING CONSTRUCTION.
- SSCAFCA WILL HIRE A TESTING LAB TO PROVIDE TESTING OF BACK FILL & COMPACTION.
- ALL LAND DISTURBING ACTIVITIES MUST BE LIMITED TO THE PUBLIC RIGHT OF WAY AND EXISTING EASEMENT UNLESS WRITTEN PERMISSION IS OBTAINED FROM ANY PRIVATE PROPERTY OWNERS AND COPIES OF WRITTEN PERMISSION MUST BE PROVIDED TO THE CITY OF RIO RANCHO PRIOR TO ANY GRADING OR LAND DISTURBANCE ON ANY AND ALL PRIVATE PROPERTY.



Southern Sandoval
County
Arroyo Flood Control
Authority

1041 Commercial Dr. S.E.
Rio Rancho, New Mexico 87124
505-892-RAIN (7246)
505-892-7241 (Fax)
www.sscafca.com

REVISIONS &
CHANGE NOTICES

NO.	DESCRIPTION	DATE

OWNER/DEVELOPER
LD DEVELOPMENT, LLC

MARK GOODWIN & ASSOCIATES, P.A.
CONSULTING ENGINEERS
P.O. BOX 6009
ALBUQUERQUE, NEW MEXICO 87109
(505) 828-2200, FAX (505) 797-9539

SSCAFCA

10TH STREET DRAINAGE IMPROVEMENTS

STANDARD ABBREVIATIONS

ENGINEER'S SEAL



PROJECT NO. A21003
DESIGNED BY: HLC
DRAWN BY: CM
CHECKED BY: DMG
DATE: Mar-21

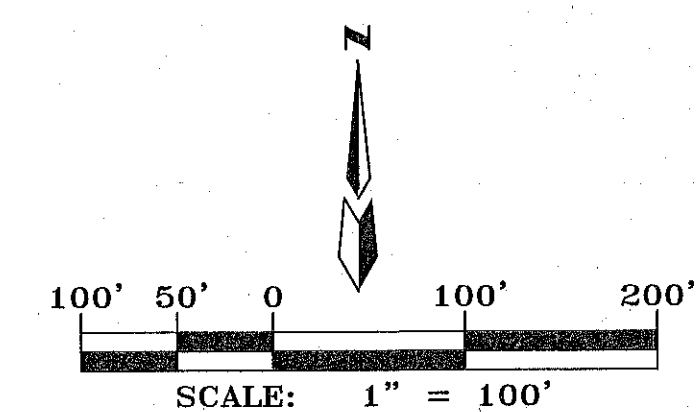
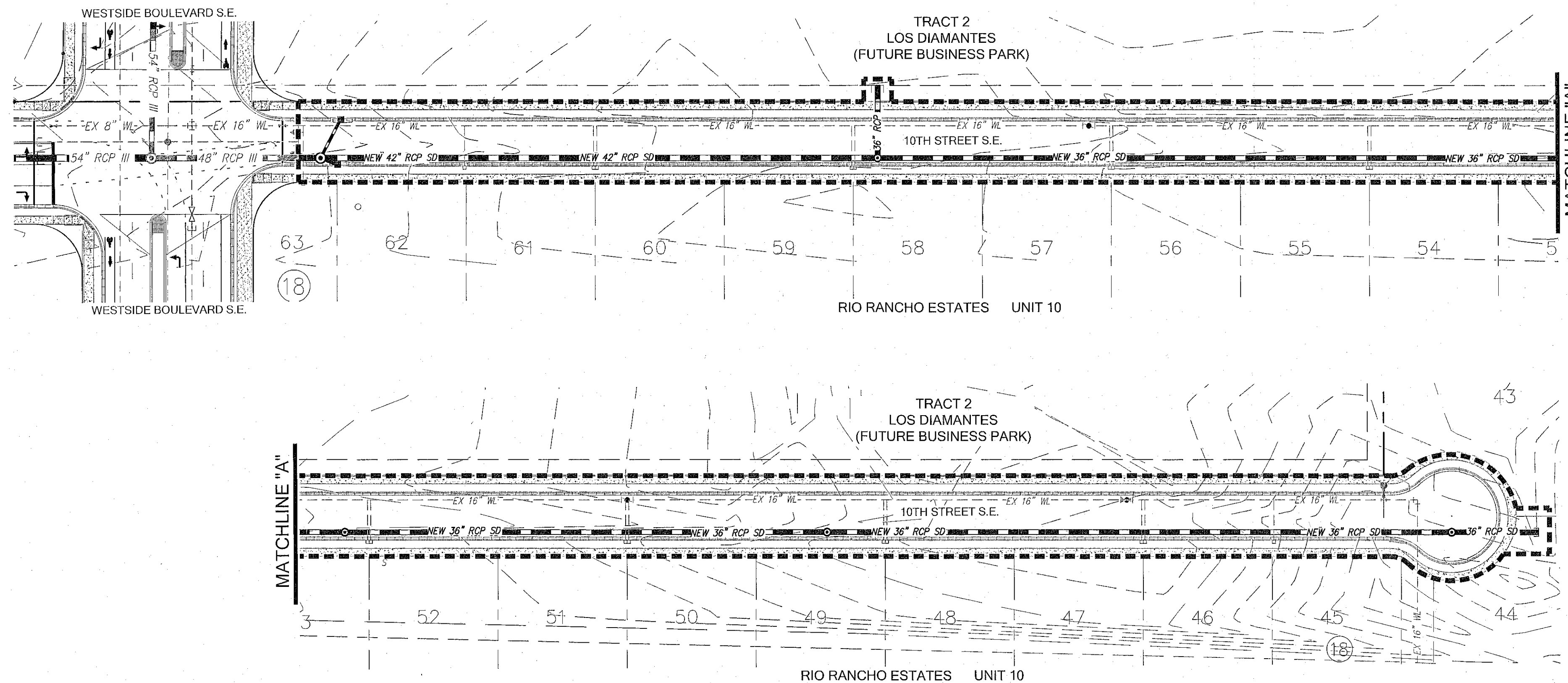
SHEET:

3

SHEET 3 OF 8

- EROSION CONTROL NOTES:

1. THE CONTRACTOR IS TO ENSURE THAT NO SOIL ERODES FROM THE SITE ONTO ADJACENT PROPERTY OR PUBLIC RIGHT-OF-WAY. THIS SHOULD BE ACHIEVED BY IMPLEMENTING BEST MANAGEMENT PRACTICES (BMP'S) TO PROTECT THE SOIL FROM WIND, AND WATER EROSION.
2. DURING THE MONTHS OF JUNE, JULY, AUGUST OR SEPTEMBER, ANY GRADING WITHIN OR ADJACENT TO A WATERCOURSE DEFINED AS A MAJOR FACILITY SHALL PROVIDE FOR EROSION CONTROL AND SAFE PASSAGE OF THE 100-YEAR DESIGN STORM RUNOFF DURING THE CONSTRUCTION PHASE.
3. CONTRACTOR SHALL CONFORM TO ALL CITY, COUNTY, STATE AND FEDERAL DUST CONTROL AND STORMWATER POLLUTION PREVENTION REQUIREMENTS AND IS RESPONSIBLE FOR PREPARING AND OBTAINING ALL NECESSARY APPLICATIONS, PERMITS AND APPROVALS.
4. ALL GRADED AREAS WHICH DO NOT RECEIVE A FINAL SURFACE TREATMENT WILL BE REVEGETATED IN ACCORDANCE WITH NEW MEXICO APWA STANDARD SPECIFICATION 1012 AND THE LANDSCAPE SPECIFICATIONS.
5. CONTRACTOR SHALL OBTAIN AND ABIDE BY A GRADING PERMIT FROM THE CITY OF RIO RANCHO.
6. STORMWATER POLLUTION PREVENTION PLANS AND ACCOMPANYING FEDERAL EPA ADMINISTRATIVE PROCEDURES SHALL MEET THE GUIDELINES AND PROCEDURES OUTLINED IN THE CURRENT EDITION OF THE NEW MEXICO DEPARTMENT OF TRANSPORTATION STORMWATER MANAGEMENT GUIDELINES FOR CONSTRUCTION AND INDUSTRIAL ACTIVITIES.



**Southern Sandoval
County
Arroyo Flood Control
Authority**

1041 Commercial Dr. S.E.
Rio Rancho, New Mexico 87124
505-892-RAIN (7246)
505-892-7241 (Fax)
www.sscafca.com

[illegible]

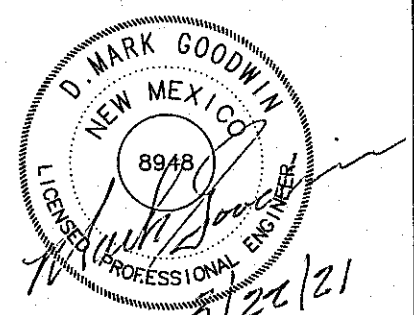
OWNER/DEVELOPER
LD DEVELOPMENT, LLC

dmj MARK GOODWIN & ASSOCIATES, P.A.
CONSULTING ENGINEERS
P.O. BOX 90606
ALBUQUERQUE, NEW MEXICO 87199
(505)828-2200, FAX (505)797-9539

SSCAFCA
10TH STREET DRAINAGE IMPROVEMENTS

EROSION CONTROL PLAN

ENGINEER'S SEAL



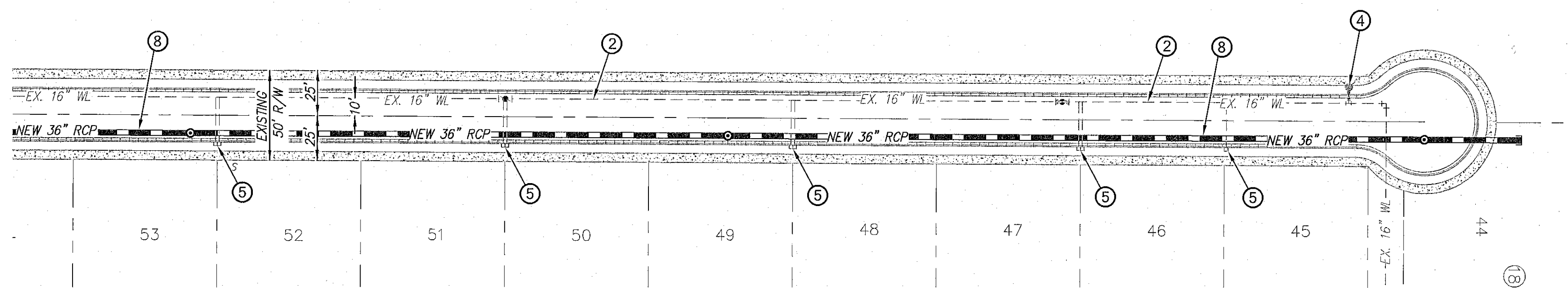
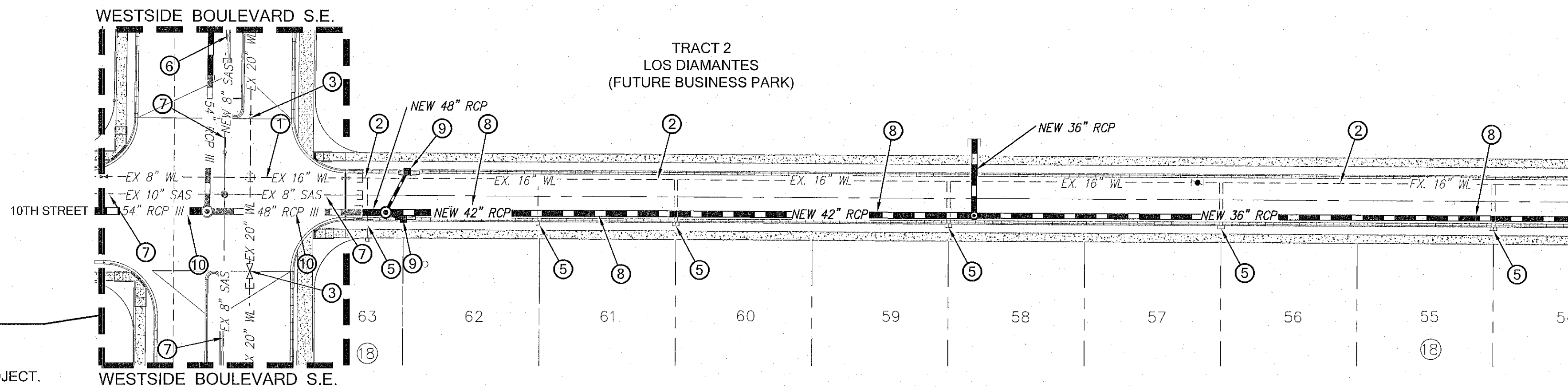
PROJECT NO.	A21003
DESIGNED BY:	HLC
DRAWN BY:	CM
CHECKED BY:	DMG
DATE:	Mar-21

SHEET: 4

SHEET 4 OF 8

F:\A18026\ACAD 2019\A18026 Los Diamantes BP Entitlements\PLANS\10TH ST-SSCAFCA PLANS\PLANS\UTILITIES\A18026_10th STREET- ML.dwg, 5/17/2021 8:29:40 AM, \\goodwin-vn\HP PageWks XL 5100.MPP PCL3

ALL ITEMS BUILT WITH
WESTSIDE BLVD S.E.
CONSTRUCTION PLANS.
NOT A PART OF THIS PROJECT.



KEY NOTES:

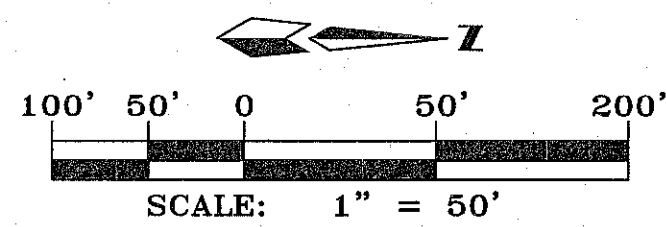
- EXISTING 16" PRESSURE CLASS 250 DUCTILE IRON WATERLINE BUILT WITH LOS DIAMANTES OFF-SITE UTILITIES, PHASE 1.
- EXISTING 16" PRESSURE CLASS 250 DUCTILE IRON WATERLINE BUILT WITH LOS DIAMANTES OFF-SITE UTILITIES, PHASE 3.
- EXISTING 20" PRESSURE CLASS 250 DUCTILE IRON WATERLINE BUILT WITH LOS DIAMANTES OFF-SITE UTILITIES, PHASE 1.
- EXISTING FIRE HYDRANT.
- EXISTING WATER METER SERVICE LINE AND BOX BUILT WITH LOS DIAMANTES OFF-SITE UTILITIES, PHASE 3.
- FUTURE SANITARY SEWER SERVICE LINE PER C.O.R.R. STD. DWG. S-6.
- EXISTING SR35 PVC SANITARY SEWER LINE BUILT WITH LOS DIAMANTES WESTSIDE BOULEVARD S.E. PLANS.
- BUILD NEW RCP III STORM DRAIN.
- BUILD NEW STORM DRAIN INLETS PER C.O.R.R. STD.
- EXISTING RCP III STORM DRAIN BUILT WITH LOS DIAMANTES WESTSIDE BOULEVARD S.E. PLANS.

LEGEND

EX 12" SAS	EXISTING SANITARY SEWER	NEW 6" WL	NEW WATERLINE
EX 16" WL	EXISTING SANITARY MANHOLE	NEW 8" WL	NEW WATER LINE REDUCER
EX 16" WL	EXISTING WATERLINE	NEW 10" WL	NEW DOUBLE WATER METER
EX 16" WL	EXISTING GATE VALVE	NEW 12" WL	NEW SINGLE WATER METER
EX 16" WL	EXISTING FIRE HYDRANT	NEW 14" WL	NEW FIRE HYDRANT
EX 24" SD	EXISTING STORM DRAIN	NEW 16" WL	NEW PRESSURE REDUCING STATION
EX 24" SD	EXISTING STORM DRAIN MANHOLE	NEW 18" WL	NEW BUTTERFLY VALVE
F 8" SAS	FUTURE PHASE SANITARY SEWER	NEW 20" WL	NEW GATE VALVE
F 8" WL	FUTURE PHASE WATERLINE	NEW 22" WL	NEW STORM DRAIN
F 24" SD	FUTURE PHASE STORM DRAIN	NEW 24" SD	NEW STORM DRAIN MANHOLE
8" SAS	NEW SANITARY SEWER	NEW 26" SD	NEW STORM DRAIN MANHOLE
8" SAS	NEW SANITARY SEWER MANHOLE		
8" SAS	NEW SANITARY SEWER SERVICE		

CAUTION:

NOTE THAT ALL EXISTING UTILITIES MAY NOT BE SHOWN. ALL EXISTING SERVICE CONNECTIONS ARE NOT SHOWN. ANY EXISTING UTILITIES THAT ARE SHOWN ARE APPROXIMATE LOCATION ONLY. IT SHALL BE THE SOLE RESPONSIBILITY OF THE CONTRACTOR TO CONTACT ALL THE UTILITY OWNERS AND TO CONDUCT ALL NECESSARY FIELD INVESTIGATIONS PRIOR TO ANY EXCAVATIONS AND OTHER IMPROVEMENTS.



GENERAL NOTES:

- THE CONTRACTOR SHALL COORDINATE WITH SSCAFCA/THE CITY OF RIO RANCHO TO LOCATE THE 42" STORM DRAIN CONNECTION AND ADDITIONALLY HAVE UTILITIES IN THE AREA LOCATED AND/OR THE AREA OF WORK CLEARED VIA THE NM ONE CALL SYSTEM.
- CONTRACTOR SHALL FIELD VERIFY LOCATION AND DEPTH OF ALL UTILITIES THAT ARE TO BE CONNECTED TO. THE CONTRACTOR SHALL NOTIFY THE ENGINEER IMMEDIATELY IF CONNECTION ELEVATIONS AND LOCATIONS DIFFER FROM THESE PLANS.
- ALL WORK INCLUDING TRENCHING SHALL BE PERFORMED IN ACCORDANCE WITH OSHA RULES AND REGULATIONS.



**Southern Sandoval
County
Arroyo Flood Control
Authority**

1041 Commercial Dr. S.E.
Rio Rancho, New Mexico 87124
505-892-RAIN (7246)
505-892-7241 (Fax)
www.sscafca.com

REVISIONS & CHANGE NOTICES

NO.	DESCRIPTION	DATE

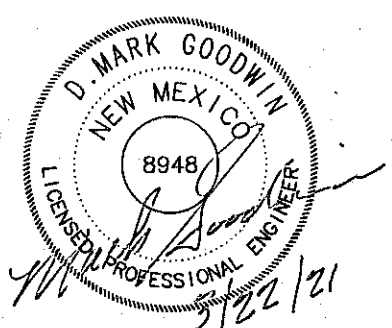
OWNER/DEVELOPER
LD DEVELOPMENT, LLC

MARK GOODWIN & ASSOCIATES, P.A.
CIVIL ENGINEERS
P.O. BOX 8066
ALBUQUERQUE, NEW MEXICO 87109
(505)938-2200, FAX (505)937-8839

SSCAFCA
10TH STREET DRAINAGE IMPROVEMENTS

MASTER UTILITY PLAN

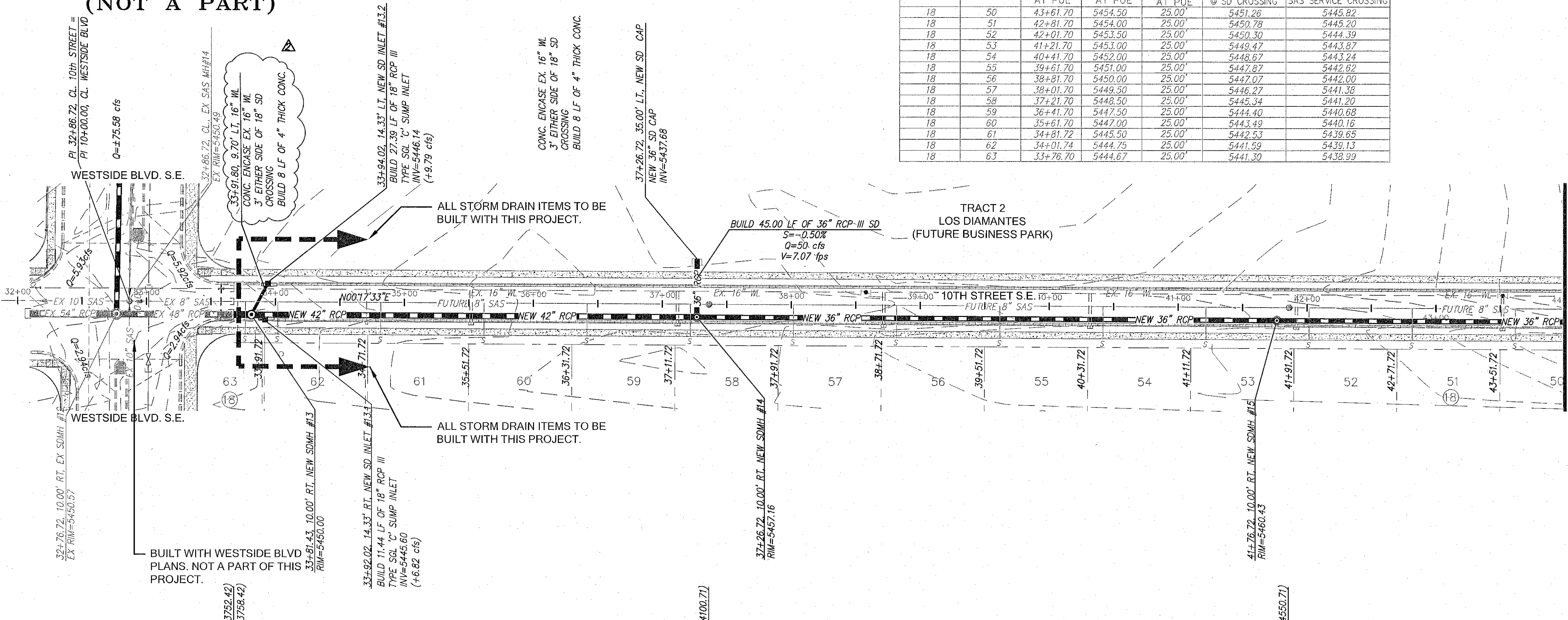
ENGINEER'S SEAL



PROJECT NO. A21003
DESIGNED BY: HLC
DRAWN BY: CM
CHECKED BY: DMG
DATE: Mar-21

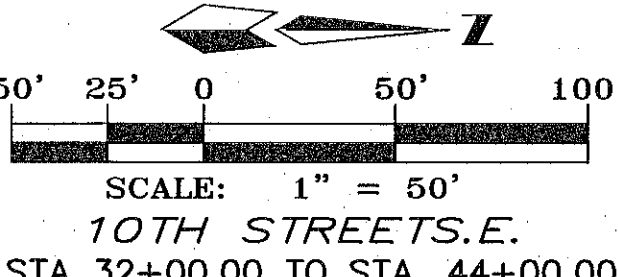
SHEET:
5
SHEET 5 OF 8

INTERSECTION FOR
INFORMATION ONLY
(NOT A PART)



FUTURE SANITARY SEWER SERVICES						
BLOCK	LOT	STATION AT PUE	INV. ELEV. AT PUE	LENGTH AT PUE	SAS SERVICE INV. @ SD CROSSING	TOP SD PIPE @ SAS SERVICE CROSSING
18	50	43+61.70	5454.50	25.00'	5451.26	5445.82
18	51	42+81.70	5454.00	25.00'	5450.78	5445.20
18	52	42+01.70	5453.50	25.00'	5450.30	5444.59
18	53	41+21.70	5453.00	25.00'	5449.82	5443.97
18	54	40+41.70	5452.00	25.00'	5448.87	5443.34
18	55	39+61.70	5451.00	25.00'	5447.87	5442.62
18	56	38+81.70	5450.00	25.00'	5447.07	5442.00
18	57	38+01.70	5449.50	25.00'	5446.27	5441.38
18	58	37+21.70	5448.50	25.00'	5445.34	5441.20
18	59	36+41.70	5447.50	25.00'	5444.40	5440.68
18	60	35+61.70	5447.00	25.00'	5443.49	5440.16
18	61	34+81.70	5445.50	25.00'	5442.53	5439.65
18	62	34+01.74	5444.75	25.00'	5441.59	5439.13
18	63	33+76.70	5444.67	25.00'	5441.30	5438.99

NOTES
1. ALL STATIONING IS BASED ON THE CENTERLINE OF 10TH STREET S.E. (50 R/W).



SSCAFCA
Southern Sandoval
County
Arroyo Flood Control
Authority
1041 Commercial Dr. S.E.
Rio Rancho, New Mexico 87124
505-892-RAIN (7246)
505-892-7241 (Fax)
www.sscafca.com

REVISIONS & CHANGE NOTICES		
NO.	DESCRIPTION	DATE
1	REVISED 6" DIA MH	5/10/21
2	16" M. CONC. ENCASUREMENT	5/10/21
3	REVISED 36" DIA PIPE	5/10/21
4	REVISED CLASS IV	5/10/21

OWNER/DEVELOPER
LD DEVELOPMENT, LLC

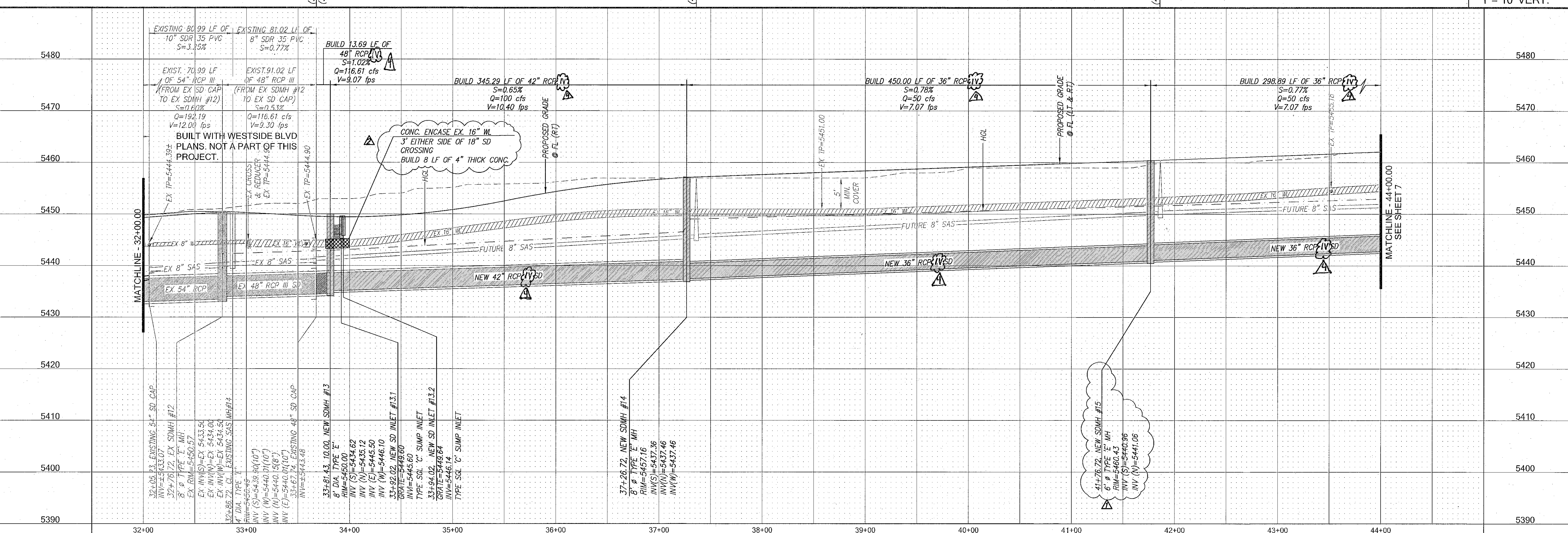
SSCAFCA

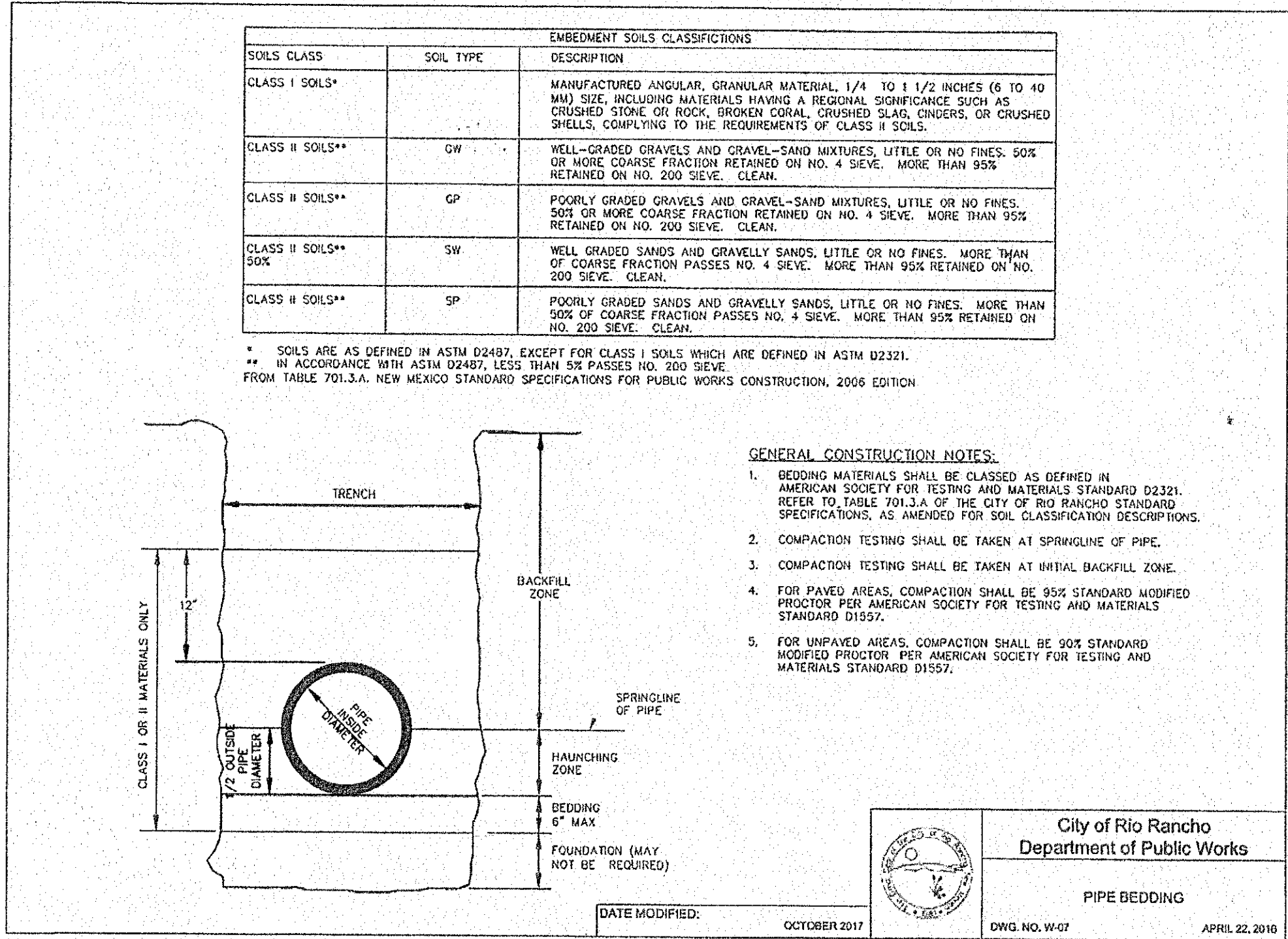
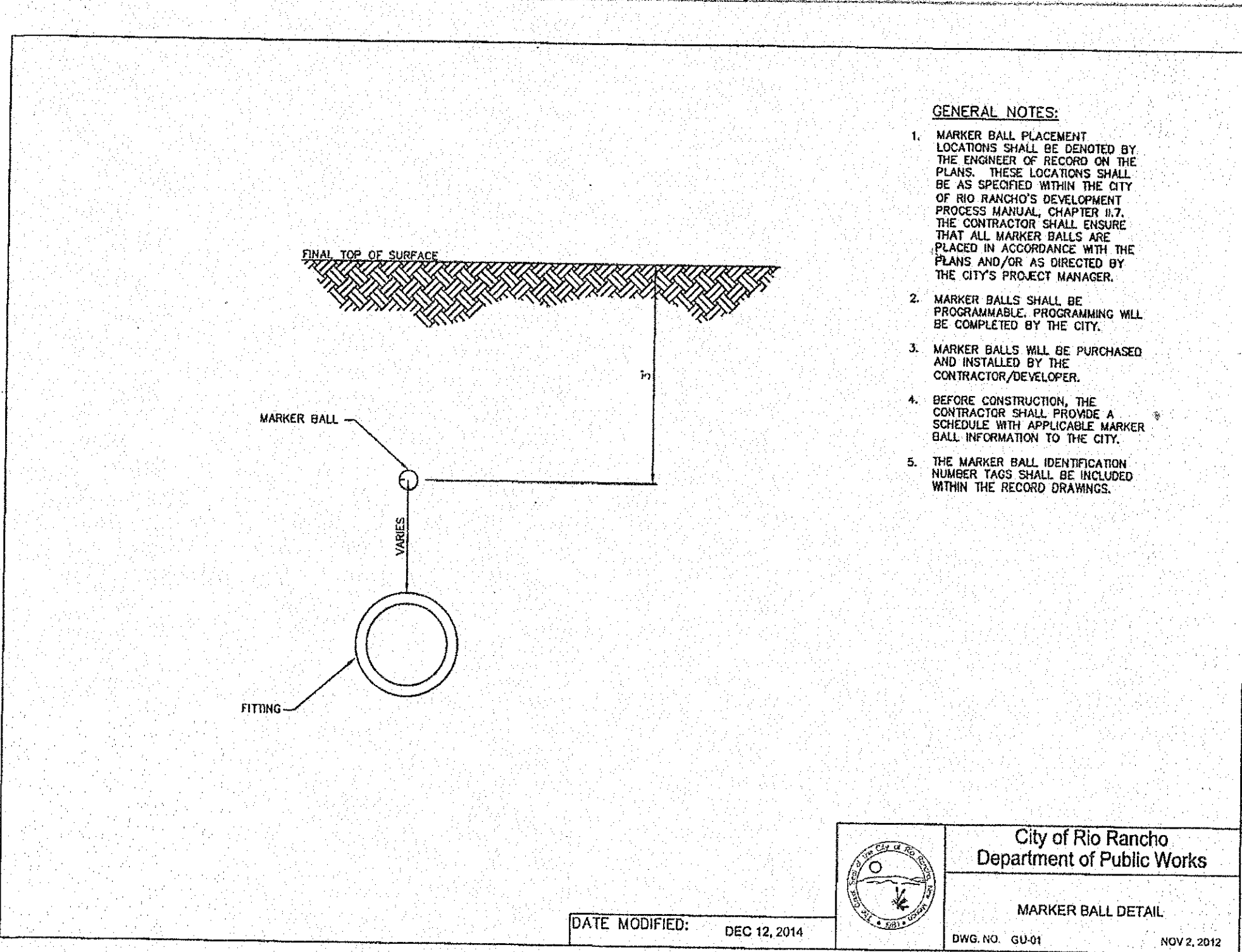
UTILITY PLAN & PROFILE
STA. 32+00.00 - STA. 44+00.00

ENGINEER'S SEAL
D. MARK GOODWIN
NEW MEXICO
REGISTERED PROFESSIONAL ENGINEER
8948
4/23/21

PROJECT NO. A21003
DESIGNED BY: HLC
DRAWN BY: CM
CHECKED BY: DMG
DATE: Mar-21

SHEET: 6
SHEET 6 OF 8





**Southern Sandoval
County
Arroyo Flood Control
Authority**

1041 Commercial Dr. S.E.
Rio Rancho, New Mexico 87124
505-892-RAIN (7246)
505-892-7241 (Fax)
www.sscafca.com

REVISIONS &
CHANGE NOTICES

NO.	DESCRIPTION	DATE

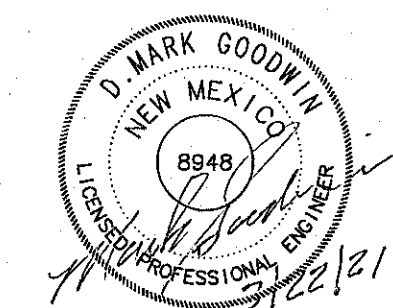
OWNER/DEVELOPER
LD DEVELOPMENT, LLC

MARK GOODWIN & ASSOCIATES, P.A.
CONSULTING ENGINEERS
P.O. BOX 6000
ALBUQUERQUE, NEW MEXICO 87109
(505) 828-2200, FAX (505) 797-9539

UTILITY DETAILS WATER

SSCAFCA
10TH STREET DRAINAGE IMPROVEMENTS

ENGINEER'S SEAL



PROJECT NO. A21003
DESIGNED BY: HLC
DRAWN BY: CM
CHECKED BY: DMG
DATE: Mar-21

SHEET:

8

SHEET 8 OF 8