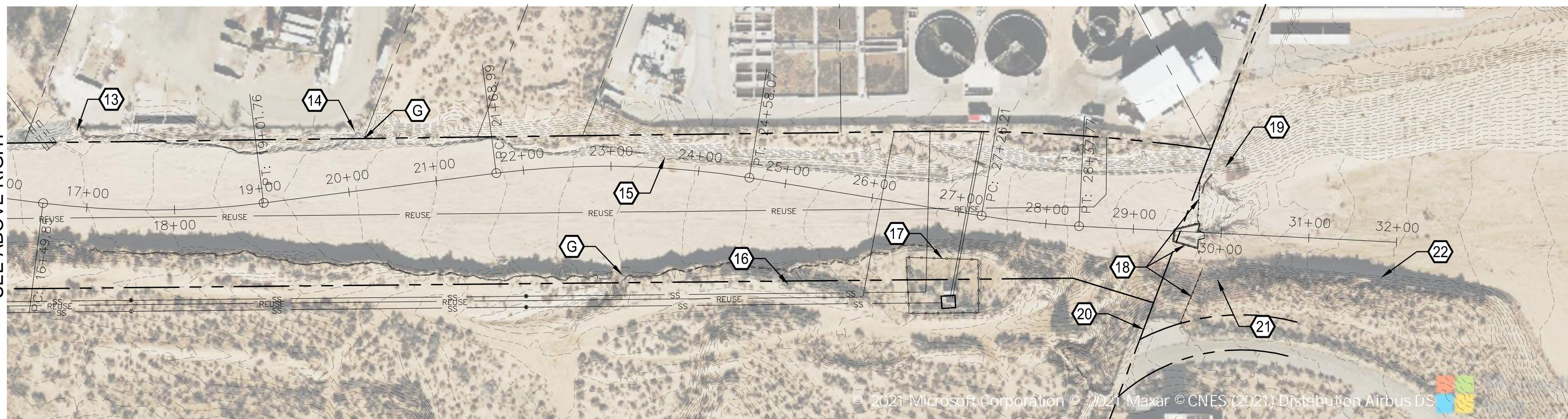
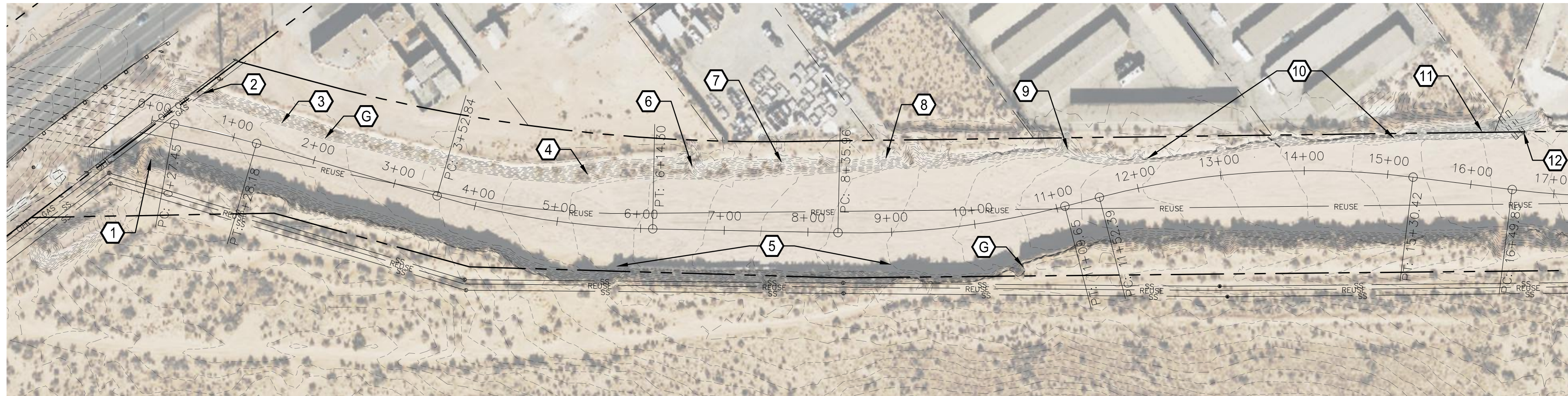
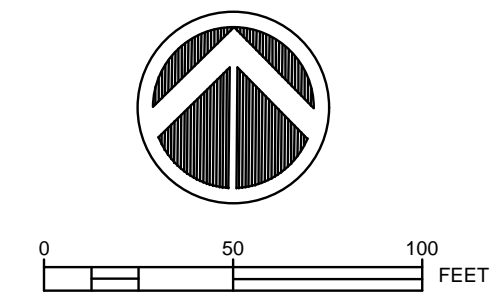


GENERAL NOTE:

SMALL QUANTITIES OF BROKEN CONCRETE AND MISCELLANEOUS NON-NATURAL RUBBLE EXIST THROUGHOUT THE PROJECT AREA. REMOVAL AND DISPOSAL OF THESE ITEMS, ALTHOUGH NOT INDIVIDUALLY CALLED OUT FOR REMOVAL ON THIS SHEET, SHALL BE CONSIDERED INCIDENTAL TO THE REMOVAL OF OBSTRUCTIONS BID ITEM.



KEYED NOTES:

1. STA. -0+15± TO 0+70±, 40'±RT., IF NECESSARY REMOVE AND DISPOSE OF WIRE ENCLOSED RIPRAP 85'± X 13'±. DEPTH UNKNOWN.
2. STA. 0+50±, 50'±LT., REMOVE AND DISPOSE OF WIRE ENCLOSED RIPRAP 25'± X 15'±. DEPTH UNKNOWN.
3. STA. 0+60± TO 2+60±, 35'±LT., IF NECESSARY REMOVE AND DISPOSE OF ROCK GABIONS 200'± ALONG TOE OF BANK.
4. STA. 5+30±, 70'±LT., REMOVE AND DISPOSE OF 1± CY CONCRETE DEBRIS.
5. STA. 5+90± TO 12+80±, 50'±RT., IF NECESSARY REMOVE AND SALVAGE APPROX. 115± CONCRETE BLOCKS (6'X2'X2').
6. STA. 6+60±, 75'±LT., REMOVE AND DISPOSE OF < 1 CY ROCK/WIRE RUNDOWN.(SEE GENERAL NOTE, THIS SHEET.)
7. STA. 7+70±, 80'±LT., REMOVE AND DISPOSE OF 34± CY CONCRETE DEBRIS.
8. STA. 9+00±, 90'±LT., REMOVE AND DISPOSE OF 69± CY CONCRETE DEBRIS RUNDOWN.
9. STA. 11+30±, 65'±LT., REMOVE WIRE ENCLOSED RIPRAP RUNDOWN AND STAKES. SALVAGE ROCK, DISPOSE OF REMAINDER.
10. STA. 11+40± TO 17+54±, TOE OF LT. BANK, REMOVE AND SALVAGE 614'± JERSEY BARRIERS.
11. STA. 15+20± TO 16+90±, 50'±LT. TO 75'±, REMOVE AND SALVAGE 2-4" CRUSHED ROCK.
12. STA. 16+55±, 69'±LT., REMOVE AND SALVAGE CMP END SECTION(1).
13. STA. 16+84±, 87'±LT., REMOVE AND REPLACE 70'± FENCING IN KIND. INSTALL TEMPORARY FENCING DURING CONSTRUCTION.
14. STA. 20+20±, 65'±LT., REMOVE AND DISPOSE OF 4± CY CONCRETE DEBRIS. REMOVE AND REPLACE 50'± FENCING IN KIND.INSTALL TEMPORARY FENCING DURING CONSTRUCTION.
15. STA. 25+00± TO 26+85±, 10'± TO 34'±LT., REMOVE RIPRAP GABIONS AS NECESSARY TO CONSTRUCT PROPOSED IMPROVEMENTS. SALVAGE ROCK, DISPOSE OF REMAINDER.
16. STA. 25+20±, 112'±LT., (4) BOLLARDS, CONTRACTOR TO VERIFY SUBSURFACE UTILITY PRIOR TO REMOVAL. DISPOSE IF REMOVED.
17. STA. 26+50± TO 27+30±, 62'± TO 50'±RT., REMOVE 120'± FENCING.
18. STA. 29+50± TO 30+00±, REMOVE AND DISPOSE OF CONC. STRUCTURE, WALLS AND SOIL CEMENT UPSTREAM OF FLUME.REMOVE AND DISPOSE OF ALL POST, REMOVE AND SALVAGE CABLE.
19. STA. 30+15±, 75'±LT., REMOVE RIPRAP GABIONS AND RIPRAP.SALVAGE ROCK, DISPOSE OF REMAINDER.
20. STA. 29+14±, 110'±RT., REMOVE AND SALVAGE SIGNAGE.
21. STA. 30+00±, 50'±RT., REMOVE AND DISPOSE OF GROUTED RIPRAP.
22. STA. 30+50± TO 32+00±, 40'±RT. REMOVE AND SALVAGE RIPRAP.



Southern Sandoval County Arroyo Flood Control Authority

1041 Commercial Dr. S.E.
Rio Rancho, New Mexico 87124
505-892-RAIN (7246)
505-892-7241 (Fax)
www.sscafca.com



LOWER MONTOYAS ARROYO BANK STABILIZATION PROJECT

SITE REMOVALS PLAN

THIS CONTRACT ALLOWS THE OWNER TO MAKE PAYMENT WITHIN 45 DAYS AFTER SUBMISSION OF AN UNDISPUTED REQUEST FOR PAYMENT.

REVISIONS & CHANGE NOTICES		
MARK	DESCRIPTION	DATE
1	REVISED NOTE	1/25/22

PROJECT NO: MO_P0029-01
DESIGNED BY: AES
DRAWN BY: KLF
CHECKED BY: JN
DATE: 1/6/2022