



Southern Sandoval County Arroyo Flood Control Authority
1041 Commercial Dr. SE
Rio Rancho, NM 87124
505-892-7246

Lower Montoyas Arroyo Bank Stabilization Project

Non-Mandatory Pre-Bid Conference

January 20, 2022 – 10 AM

General Project Information

▶ SSCAFCA Personnel

- ▶ Procurement Manager – Debbie Casaus
- ▶ Design Engineer – Andrés Sanchez/Caitlin Purigraski (structural)
- ▶ Field Engineer – Andy Edmondson
- ▶ Construction Inspector – Mark Rios

▶ Project Purpose

- ▶ To increase flood-carrying capacity and provide erosion protection along the Arroyo de los Montoyas between NM528 and City of Rio Rancho/Village of Corrales municipal boundary

▶ Project Funding

- ▶ FEMA/DHSEM
- ▶ State of NM Capital Outlay
- ▶ SSCAFCA Bond Funds



Bid Schedule

- ▶ **Deadline to Submit Written Questions – January 24, 5:00 PM**
 - ▶ Submit all questions to Debbie Casaus, Procurement Officer via e-mail at dcasaus@sscafca.com
- ▶ **Response to Written Questions – January 28, 5:00 PM**
 - ▶ Will be posted to SSCAFCA's website in the form of an Addendum
- ▶ **Deadline for all Addenda – January 28, 5:00 PM**
- ▶ **Bid Opening at SSCAFCA – February 1, 3:00 PM**
- ▶ **Bid Review and Recommendation of Award – February 1-4**
- ▶ **Notify Apparent Lowest Responsive Bidder – February 7**
- ▶ **Board Approval – February 8 Special Board Meeting**
- ▶ **Target Construction Start Date – TBD, preferably early March**



Location Map



Main Project Components*

**Quantities shown here are based on Unit Price Bid Proposal*

1. *38,606 CY of excavation, haul, placement, & compaction on-site*
2. *29,800 SY of Propex Armormax 75 Anchored Woven Turf Reinforcement System, or approved equal*
3. *1,730 CY of Reinforced Concrete Channel – Base Bid = no added color*
4. *5,858 CY Type L (D50=12”), 262 CY Type VL (D50=6”) of Dumped Riprap*
5. *3,810-LF of Concrete Flush Curb, & ArmorMax concrete termination - height varies*
6. *3,173-LF 5-strand Barbless Wire Fence*
7. *2 - NMDOT Metal Pipe Concrete Blankets*
8. *1 - Reinforced Concrete Drop Structure and appurtenances – Bid Item 22 includes installation of all elements shown on Sheets S-1 thru S-4 (pipe fencing, post and cable, etc)*
9. *****This item pertained to an Additive Alternative and was intentionally removed from the Original Presentation. Clarification on the removal of the Additive Alternative will be provided as part of Addendum #1.***



Additive Alternative – How Does It Work?

This Page was intentionally removed from the
Original Presentation.

Clarification on the removal of the Additive
Alternative will be provided as part of
Addendum #1.

Existing Utilities

- ▶ **2 parallel 15” PVC Sanitary Sewer Lines in the right bank**
 - ▶ NOT currently in service
 - ▶ If encountered, can be removed per CORR spec
 - ▶ Portions of 15” SAS have already been removed
 - ▶ These lines cross the arroyo perpendicular to the project near STA 27+00
 - ▶ **Single 10” Reuse Line, between parallel 15” SAS**
 - ▶ NOT currently in service
 - ▶ If encountered, shall be raised, lowered, or otherwise relocated so that it is service-ready in the future and is not in conflict with the project improvements. This work paid for under Bid Item 5 – 10” PVC Reuse Line Relocation (Allowance Item).
 - ▶ This line crosses the arroyo perpendicular to the project near STA 26+50
 - ▶ **Single 16” FPVC Reuse Line – 8’ +/- below existing arroyo grade.**
 - ▶ IN SERVICE and shall remain in-service
 - ▶ should not be affected by this project
 - ▶ **Overhead electric lines, Gas, other dry utilities near BOP (near NM528 ROW)**
-



Existing Utilities (continued)

Utilities shown here to demonstrate their approximate location relative to the project site.
For more details on existing utilities refer to plans.



Green=SAS, Magenta=Reuse, Light Blue=Storm Drain, Dark Blue=Water

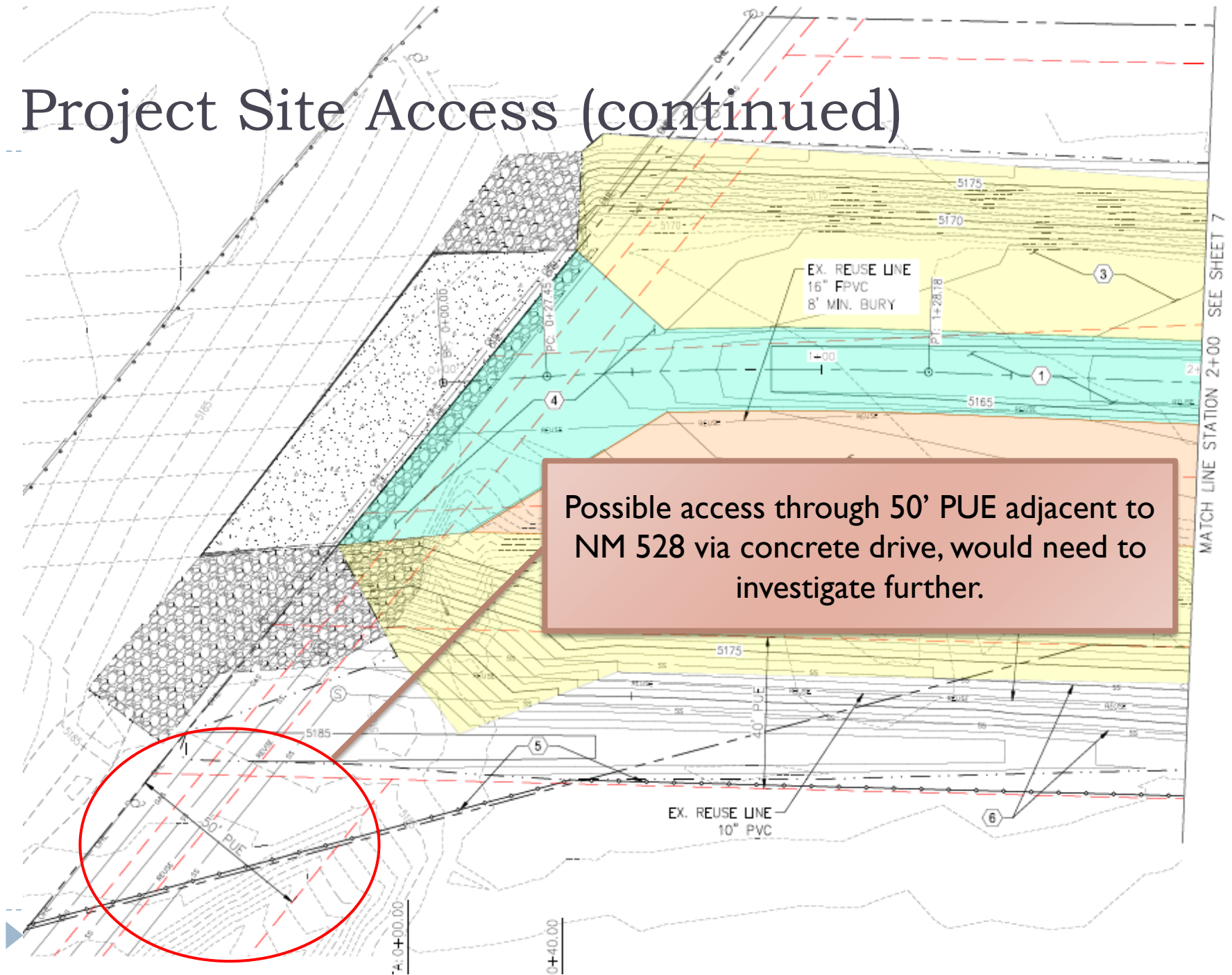


Project Site Access

- ▶ Only current legal access is from Don Julio Rd (Northern Blvd/NM528 intersection)



Project Site Access (continued)



Possible access through 50' PUE adjacent to NM 528 via concrete drive, would need to investigate further.

Contractor Staging Area Options

1. Within the 40' PUE between STA 13+00 and 21+00
2. Contractor has the option to negotiate with adjacent land owner(s) for a staging area.
 - a. Clear/Grub, and Post-construction ripping/seeding of the staging area will be the responsibility of the contractor



Miscellaneous Considerations...

- ▶ **Temporary Construction Easements**
 - ▶ Currently being obtained by SSCAFCA for minor grading and seeding needed along the north border of the project
- ▶ **The Arroyo de los Montoyas is an active arroyo, proceed accordingly, see Bid Item #3 – Control of Storm Water and Nuisance Flow**
- ▶ **NMDOT is under construction along NM528 and is expected to continue through 2023**
 - ▶ Coordination with the NMDOT's contractor is likely as the projects are adjacent to one another
- ▶ **Non mandatory Site Visit following this meeting**



Misc. / Questions

- ▶ SSCAFCA Staff will be providing construction oversight on project
- ▶ Project budget/cost estimate: \$4.6M excl. NMGRT
- ▶ SSCAFCA does not maintain a Bidder's List
- ▶ The Contractor is responsible for checking the website regularly for any updates/changes to bid documents
- ▶ All changes to currently posted bid documents will be issued through an Addendum.
- ▶ Comments from Fiscal Services/Procurement
- ▶ Comments from City of Rio Rancho
- ▶ Comments from other SSCAFCA Staff
- ▶ *Contractor Questions?*
- ▶ *Please sign-in if you haven't already!*

All Questions After This Meeting:

Debbie Casaus, Procurement Officer

▶ dcasaus@sscafca.com