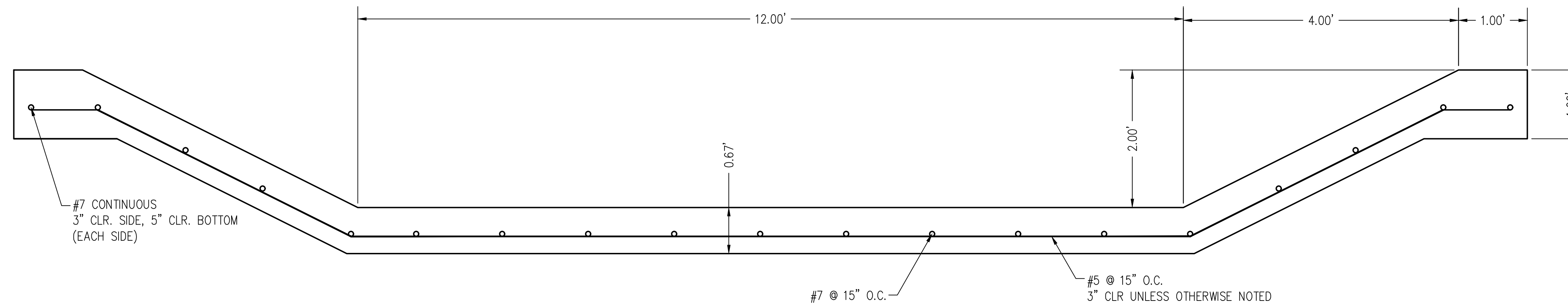


TYPICAL COMPOSITE CHANNEL SECTION - TO DEMONSTRATE COMPOSITE CHANNEL CONCEPT



CONCRETE LOW FLOW CHANNEL SECTION
BASE BID = NO CONCRETE COLOR

CONCRETE LOW FLOW CHANNEL NOTES:

1. CAST-IN-PLACE CONCRETE SHALL HAVE A COMPRESSIVE STRENGTH $f'_c=3000$ PSI MINIMUM.
2. ALL EXPOSED FORMED EDGES SHALL HAVE $\frac{3}{4}$ " CHANFER UNLESS OTHERWISE NOTED.
3. CHANNEL SUBGRADE PREPARATION TO A DEPTH OF 12", MUST ACHIEVE MAX. DRY DENSITY OF 95% PER ASTM D-1557
4. REINFORCING STEEL SHALL CONFORM TO ASTM A615, GRADE 60. MINIMUM LAP LENGTHS FOR #5 AND #7 REBAR SHALL BE 30" AND 43", RESPECTIVELY.
5. EXPOSED CHANNEL CONCRETE SHALL HAVE A TINED FINISH, TINING SHALL BE APPLIED TRANSVERSE TO FLOW.
6. BASE BID = NO CONCRETE COLOR.

1 REMOVAL OF ADDITIVE ALTERNATIVE #1



Southern Sandoval County Arroyo Flood Control Authority
1041 Commercial Dr. S.E.
Rio Rancho, New Mexico 87124
505-892-RAIN (7246)
505-892-7241 (Fax)
www.sscafca.com



LOWER MONTOYAS ARROYO BANK STABILIZATION PROJECT

LOW FLOW CONCRETE CHANNEL DETAILS

THIS CONTRACT ALLOWS THE OWNER TO MAKE PAYMENT WITHIN 45 DAYS AFTER SUBMISSION OF AN UNDISPUTED REQUEST FOR PAYMENT.

REVISIONS & CHANGE NOTICES		
MARK	DESCRIPTION	DATE
1	REMOVAL OF ADD. ALTERNATIVE #1	1/24/22

PROJECT NO: MO_P0029-01
DESIGNED BY: AES
DRAWN BY: ###
CHECKED BY: JN
DATE: 1/6/2022

Friday, January 7, 2022 8:26:56 AM - Kathy Flummer \\192.168.1.9\public\DATA\SSCA\FCA_Projects\Fire\Montoya\SSCA\FCA_Productions\Drawings\Plan_Sch_VAO_P0029-01.dwg