



SOUTHERN SANDOVAL COUNTY ARROYO FLOOD CONTROL AUTHORITY

IFB# 2024-03 – Riparia Ponds

ADDENDUM #2

September 20, 2024

This Addendum consists of two (2) pages and two (2) attachments. The information contained in this addendum shall be incorporated into the project bid and contract documents the same as if originally contained therein.

Bidders shall acknowledge receipt of this addendum on the Bid Proposal form in the space provided. Failure to acknowledge this addendum by any prospective bidder will render the bid non-responsive.

1. QUESTIONS RECEIVED FROM PROSPECTIVE BIDDERS

Q1: Is over excavation based on surveyed information or calculated using neat lines?

A1: Over excavation is paid based on neat lines.

Q2: Is there a designated staging area for the project?

A2: SSCAFCA will provide a staging area adjacent to the project site for contractor's use.

Q3: Is there a designated disposal location for excess soil for the project?

A3: SSCAFCA has designated two disposal locations. See attached exhibits. Disposal location #1 will contain approximately 10000 CY. Once approximately 10000 CY is placed at Disposal Location #1, the contractor shall take the remaining material to Disposal Location #2 (approximately 8000 CY). Legal Description of Disposal Site #1 is: Tract A, Springer 5. Legal Description of Disposal Location #2: Tract A-1-B, Black Arroyo Wildlife Park

2. BID AND CONTRACT DOCUMENTS – VOLUME 1

- Replace Pages 130-132 of Volume 1 of the Bid and Contract Documents with the attached wage rate information. An updated Bid and Contract Documents Volume 1 is available on the IFB 2024-03 website: [IFB 2024-03 Riparia Ponds - SSCAFCA](#)

All other provisions of the Bid and Contract Documents shall remain unchanged. This Addendum is hereby made a part of the Bid and Contract Documents to the same extent as those provisions contained in the originals.



Andrés Sanchez, PE
SSCAFCA Design Services Director

Attachment:

1. Disposal Location Exhibits (3 pages)
2. Wage Rates (3 pages)

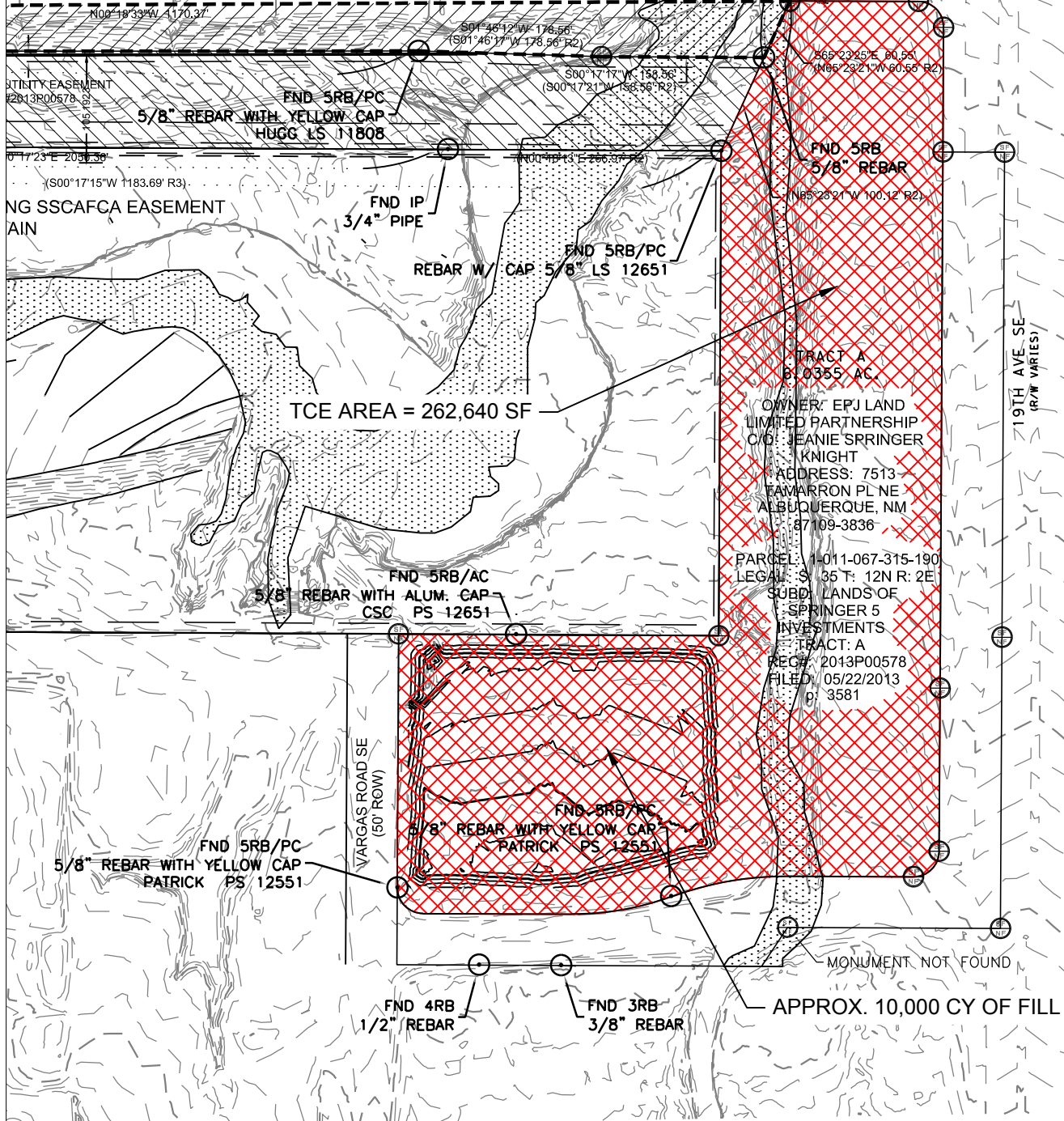
IFB 2024-03 Riparia Ponds Locations for Disposal of Spoil



AR 5/8" HUGG CAP DESTROYED TAG 11184

USER BLVD SE RIGHT-OF-WAY TO BE GRANTED TO SSCAFCA AS EASEMENT WITH THIS PLAT.

TRUCTED DRAINAGE FACILITIES WITHIN A PUBLIC RIGHT-OF-WAY MUST HAVE RESTRICTED ACCESS
UNAUTHORIZED VEHICULAR ACCESS WITH PIPE OR TUBE GATE.



SCALE: 1" = 150'

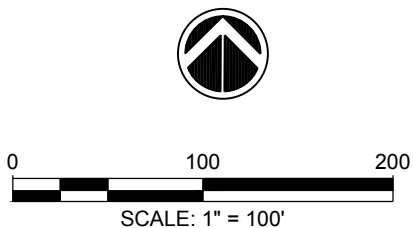
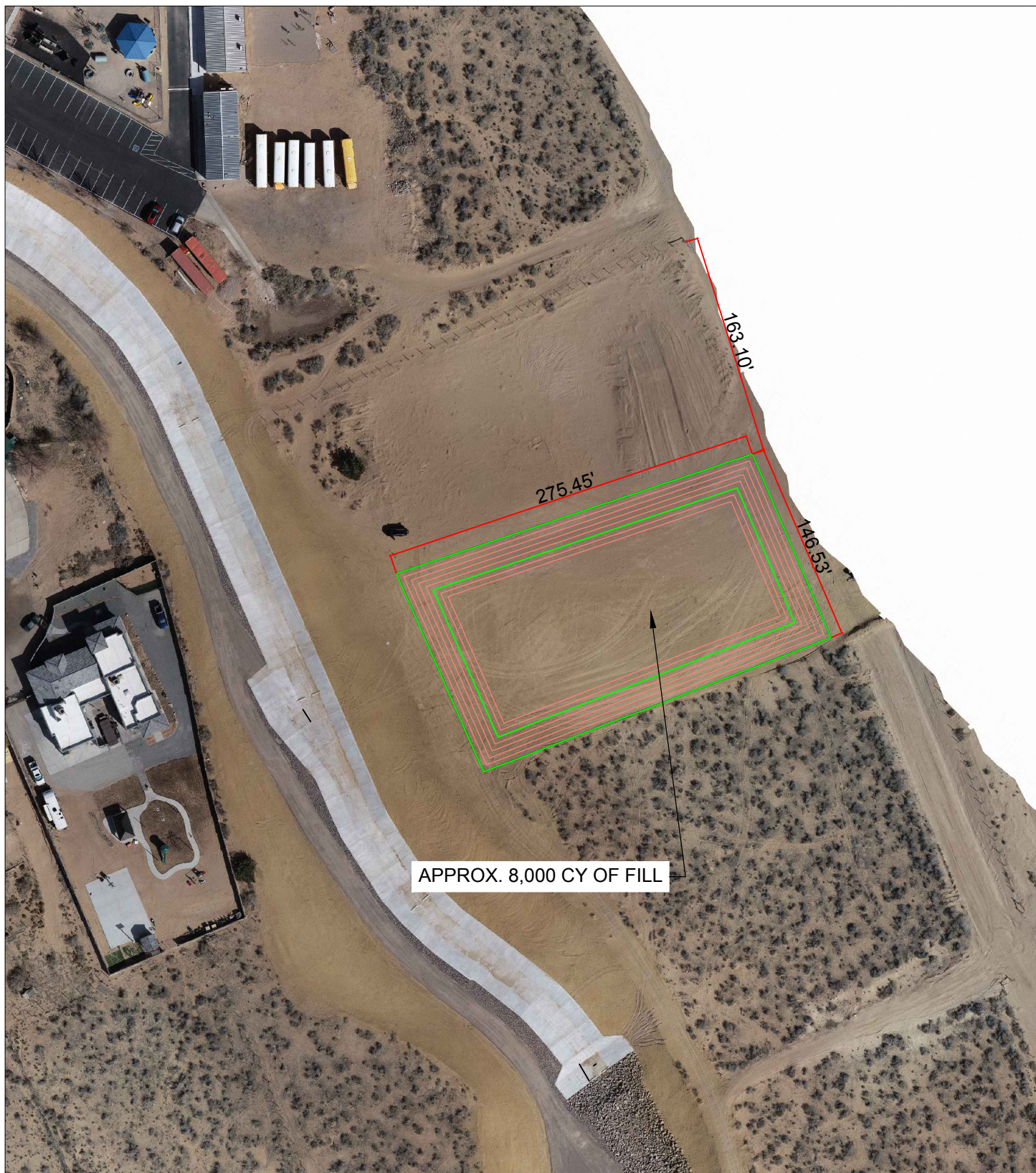


Southern Sandoval County
Arroyo Flood Control Authority

RIPARIA PONDS
DISPOSAL LOCATION 1

September 19, 2024

C:\USERS\JWGL\ONE DRIVE - SOUTHERN SANDOVAL COUNTY ARROYO FLOOD CONTROL AUTHORITY\SSCAFCA_PROJECT_FILES\BLACK\BL_P0001-03\AUTOCAD\YARD STOCKPILE EXHIBIT.DWG
Friday, September 20, 2024 11:55:57 AM-JWGL



Southern Sandoval County
Arroyo Flood Control Authority

RIPARIA PONDS
DISPOSAL LOCATION 2

September 20, 2024

**LABOR RELATIONS DIVISION**

401 Broadway NE
Albuquerque, NM 87102
Phone: 505-841-4400
Fax: 505-841-4424

226 South Alameda Blvd
Las Cruces, NM 88005
Phone: 575-524-6195
Fax: 575-524-6194

WWW.DWS.STATE.NM.US

Wage Decision Approval Summary

1) Project Title: Riperia Ponds
Requested Date: 09/13/2024
Approved Date: 09/17/2024
Approved Wage Decision Number: SA-24-2999-A

Wage Decision Expiration Date: 01/15/2025

2) Physical Location of Jobsite for Project:
Job Site Address: 1280 15th street SE
Job Site City: Rio Rancho
Job Site County: Sandoval

3) Contracting Agency Name (Department or Bureau): Southern Sandoval County Arroyo Flood Control Authority
Contracting Agency Contact's Name: Andy Edmondson
Contracting Agency Contact's Phone: (505) 892-7246 Ext.

4) Estimated Contract Award Date: 10/15/2024

5) Estimated total project cost: \$4,756,836.00
a. Are any federal funds involved?: No
b. Does this project involve a building?: No
c. Is this part of a larger plan for construction on or appurtenant to the property that is subject to this project?: No
d. Are there any other Public Works Wage Decisions related to this project?: No
e. What is the ultimate purpose or functional use of the construction once it is completed?: Stormwater detention

6) Classifications of Construction:

Classification Type and Cost Total	Description
Highway/Utilities (A) Cost: \$4,756,836.00	Excavation of drainage ponds, realignment of existing arroyo, construction of grade control structures, rip rap installation, and storm drain installation, and a pond riser. ,

TYPE “A” – STREET, HIGHWAY, UTILITY & LIGHT ENGINEERING

Effective January 1, 2024

Trade Classification	Base Rate	Fringe Rate
Bricklayer/Block layer/Stonemason	27.03	10.99
Bricklayer/ Block layer/Stonemason – Curry, DeBaca, Quay and Roosevelt counties	23.10	8.89
Bricklayer/ Block layer/Stonemason – Dona Ana, Otero, Eddie, and Lea counties	29.56	14.10
Carpenter/Lather	29.11	12.79
Carpenter- Los Alamos county	33.18	13.58
Cement Mason	19.34	7.41
Drywall Finisher/Taper	26.40	8.86
Glazier/Fabricator	21.75	7.10
Ironworker Journeyman	28.49	18.71
Probationary Ironworker	22.79	18.71
Painter- Commercial	21.00	5.75
Paper Hanger	21.00	5.75
Plumber/Pipefitter	40.74	15.90
Electricians- Outside Classifications: Zone 1		
Ground man	26.32	12.79
Equipment Operator	37.76	17.13
Lineman	47.70	19.92
Journeyman technician	44.42	19.10
Cable Splicer	48.87	20.22
Electricians-Outside Classifications: Zone 2		
Ground man	26.32	12.79
Equipment Operator	37.76	17.13
Lineman	47.70	19.92
Journeyman technician	44.42	19.10

Cable Splicer	48.87	20.22
Electricians-Outside Classifications: Los Alamos county		
Ground man	27.07	12.81
Equipment Operator	38.85	17.17
Lineman/technician	48.95	20.24
Journeyman technician	45.70	19.42
Cable Splicer	53.75	21.44
Laborers		
Group I – unskilled	16.60	7.30
Group II – semiskilled	17.60	7.30
Group III – skilled	18.10	7.30
Group IV – specialty	18.60	7.30
Operators		
Group I	22.42	6.79
Group II	23.50	6.79
Group III	23.61	6.79
Group IV	24.09	6.79
Group V	24.21	6.79
Group VI	24.43	6.79
Group VII	24.62	6.79
Group VIII	25.33	6.79
Group IX	33.56	6.79
Group X	37.43	6.79
Soft Floor Layers	21.00	9.20
Truck Drivers		
Group I-IX	19.75	9.15

NOTE: All contractors are required to pay SUBSISTENCE, ZONE AND INCENTIVE PAY according to the particular trade. Details are located in a PDF attachment at WWW.DWS.STATE.NM.US. Search Labor Relations/Labor Information/Public Works/Prevailing Wage Rates.

For more information about the Subsistence, Zone, and Incentive Pay rates, or to file a wage claim, contact the Labor Relations Division at (505) 841-4400 or visit us online at www.dws.state.nm.us.