

# UPPER VENADA OFF-CHANNEL FACILITY CONSTRUCTION PLANS

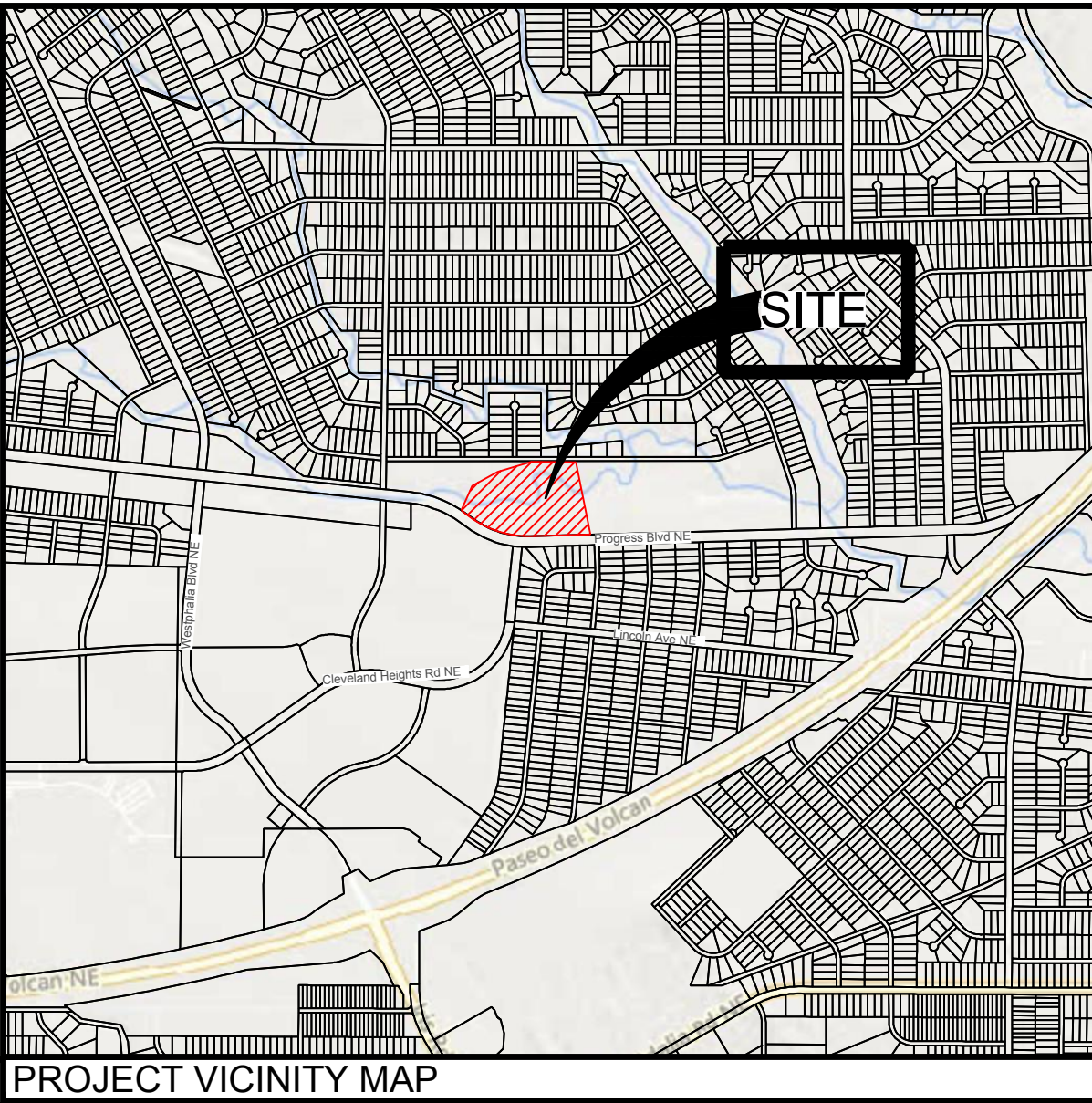


## SOUTHERN SANDOVAL COUNTY ARROYO FLOOD CONTROL AUTHORITY RIO RANCHO, NEW MEXICO

MAY 2025

SSCAFCA PROJECT NO. VE-P0032-01

SHEET LIST TABLE		GENERAL DETAILS	
SHEET NUMBER	SHEET TITLE		
GENERAL			
G-100-R	COVER	C-500	FIVE STRAND WIRE FENCE
G-101	SITE PLAN	C-501-R	MAINTENANCE ACCESS GATE
G-102-R	GENERAL NOTES & LEGEND	C-502	CABLE FENCE
G-103	SURVEY	C-503	CHAIN LINK FENCE
G-104	FENCING PLAN	C-504	PIPE RAIL DETAIL
CIVIL		C-505	FLEXAMAT PLUS- OUTLET ARMORING
C-100	GRADING PLAN	C-506	FLEXAMAT PLUS- CHANNEL LAYOUT
C-101	OVER EXCAVATION PLAN	C-507	PIPE BEDDING
C-102	ARMORING PLAN	C-508	SEWER MANHOLE COVER DETAIL
C-103	SECTION VIEW	C-509	STANDARD CONCRETE MANHOLE DETAIL 1
C-104	MAINTENANCE RAMP PLAN & PROFILE	C-510	STANDARD CONCRETE MANHOLE DETAIL 2
C-105	CHANNEL PLAN & PROFILE 1	C-511	SEDIMENT STAGE POST
C-106	CHANNEL PLAN & PROFILE 2	STRUCTURAL	
C-107	INTAKE WEIR PLAN & PROFILE	S-600	PORTED RISER GENERAL STRUCTURAL DETAILS
C-108	EMERGENCY SPILLWAY PLAN & PROFILE	S-601	PORTED RISER STRUCTURAL PLAN
C-109	EMERGENCY SPILLWAY AND INTAKE WEIR PLAN & PROFILE	S-602	PORTED RISER STRUCTURAL PROFILE
C-110	BOX CULVERT PLAN & PROFILE	S-603	PORTED RISER BOX DETAILS
C-111	BOX CULVERT WINGWALLS PLAN & PROFILE	S-604	PORTED RISER WALL DETAILS
C-112-R	PRINCIPAL SPILLWAY PLAN & PROFILE	S-605	PORTED RISER SIGNS AND ANCHORING
C-113	FLEXAMAT PLAN 1	S-606	PORTED RISER REBAR PROFILE
C-114	FLEXAMAT PLAN 2	S-607	PORTED RISER REBAR PROFILE 2
C-115	FLEXAMAT PLAN 3	S-608	PORTED RISER JOINTING PLAN
C-116	LINE AND CURVE TABLES 1	S-609	NMDOT CBC TRIPLE OPENING DETAILS
C-117	LINE AND CURVE TABLES 2	S-610	NMDOT CBC TRIPLE OPENING REBAR SCHEDULE
C-118	RAILING POINTS TABLE	S-611	NMDOT CBC HEADWALL DETAILS
		S-612	NMDOT CBC HEADWALL REBAR SCHEDULE
		S-613	NMDOT CBC WINGWALL & OUTLET APRON DETAIL 1
		S-614	NMDOT CBC WINGWALL & OUTLET APRON DETAIL 2



- REVISIONS LOG
- ADDENDUM #1, REMOVE HDPE STORM DRAIN PIPE OPTION, UPDATE BUILD NOTE 23 ON SHEET C-112, AND REPLACE SSCAFCA M101 MAINTENANCE ACCESS GATE DETAILS WITH NMDOT 607-10 GATE DETAILS. UPDATE CDS CONTACT INFORMATION. 05.13.2025

APPROVAL

SSCAFCA:

EXECUTIVE ENGINEER \_\_\_\_\_ DATE: \_\_\_\_\_

CITY OF RIO RANCHO:

DEVELOPMENT SERVICES DEPARTMENT \_\_\_\_\_ DATE: \_\_\_\_\_

**RESPEC**  
COMMUNITY DESIGN SOLUTIONS  
7770 JEFFERSON STREET SUITE 200  
ALBUQUERQUE, NEW MEXICO 87109  
WWW.RESPEC.COM PHONE: (505) 253-9718



1. THE SPECIFICATIONS FOR THIS PROJECT ARE LISTED BELOW AND ARE IDENTIFIED IN ALL BUILD/PAY NOTES AS APPLICABLE . ALL SPECIFICATIONS MUST BE ONSITE THROUGHOUT PROJECT.
  - A. SOUTHERN SANDOVAL COUNTY ARROYO FLOOD CONTROL AUTHORITY STANDARD DRAWINGS.
  - B. THE NEW MEXICO STANDARD SPECIFICATIONS FOR PUBLIC WORK CONSTRUCTION, LATEST EDITION UNLESS OTHERWISE NOTED ON PLANS: STD. SPEC. SECT
  - C. THE NEW MEXICO DEPARTMENT OF TRANSPORTATION STANDARD DRAWINGS AND SPECIFICATIONS FOR HIGHWAY AND BRIDGE CONSTRUCTION: NMDOT STD. SPEC. SECT.
  - D. THE SUPPLEMENTAL TECHNICAL SPECIFICATIONS: SUP. SPEC. SECT 1.
  - E. THE CITY OF RIO RANCHO STANDARD SPECIFICATIONS.

2. THE CONTRACTOR WILL NOTIFY NEW MEXICO ONE CALL SYSTEM 811 TWO (2) WORKING DAYS PRIOR TO COMMENCING WORK IN NEW AREAS.
3. FIVE (5) WORKING DAYS PRIOR TO BEGINNING CONSTRUCTION, THE CONTRACTOR WILL SUBMIT A DETAILED CONSTRUCTION SCHEDULE TO THE OWNER, THE CONTRACTOR SHALL OBTAIN A HAUL PERMIT FROM THE CITY OF RIO RANCHO, HAUL PERMIT COSTS AND COORDINATION WITH THE CITY OF RIO RANCHO IS CONSIDERED INCIDENTAL TO THE COMPLETION OF THE PROJECT. THE CONTRACTOR SHALL OBTAIN A BARRICADING PERMIT FROM THE CITY OF RIO RANCHO TWO (2) DAYS PRIOR TO CONSTRUCTION.
4. THE CONTRACTOR WILL BE RESPONSIBLE FOR DISPOSING OF ALL DEBRIS, INCLUDING, BUT NOT LIMITED TO HAZARDOUS WASTE AT DISPOSAL SITES APPROVED BY GOVERNMENTAL AGENCIES REGULATING THE DISPOSAL OF SUCH MATERIALS.
5. CONTRACTOR SHALL MAINTAIN A GRAFFITI-FREE SITE. CONTRACTOR SHALL PROMPTLY REMOVE ANY AND ALL GRAFFITI FROM EQUIPMENT, WHETHER PERMANENT OR TEMPORARY.
6. ALL SIGNS AND CODING WILL BE IN ACCORDANCE WITH THE "MANUAL OF UNIFORM TRAFFIC CONTROL DEVICES FOR STREETS AND HIGHWAYS" CURRENT EDITION PUBLISHED BY THE U.S. DEPARTMENT OF TRANSPORTATION.
7. THE CONTRACTOR IS TO EXERCISE CARE TO AVOID DISTURBING ANY EXISTING UNDERGROUND UTILITIES. IT WILL BE THE CONTRACTOR'S RESPONSIBILITY TO COORDINATE WITH THE UTILITY COMPANIES IN ORDER TO PREVENT ANY SERVICE DISRUPTION.
8. ALL GAS VALVES, GAS MANHOLES, ELECTRICAL MANHOLES, TELEPHONE MANHOLES, AND UTILITY POLES WILL BE ADJUSTED TO GRADE BY EACH UTILITY COMPANY. CONTRACTOR SHALL COORDINATE THIS EFFORT WITH THE UTILITY COMPANIES

- THE CONTRACTOR WILL COORDINATE THE CONSTRUCTION ACTIVITIES WITH ALL OTHER CONTRACTORS AND UTILITY COMPANIES WORKING IN THE SAME AREA. THE CONTRACTOR MAY BE REQUIRED TO RESCHEDULE THEIR ACTIVITIES TO ALLOW UTILITY CREWS TO PERFORM THEIR REQUIRED WORK. NO ADDITIONAL COMPENSATION WILL BE ALLOWED FOR DELAYS OR INCONVENIENCE CAUSED BY UTILITY COMPANY WORK CREWS.
10. CONTRACTOR WILL MAKE ALL WATER VALVES AND MANHOLES ACCESSIBLE TO CITY OF RIO RANCHO AT ALL TIMES.
11. PRIOR TO CONSTRUCTION THE CONTRACTOR WILL EXCAVATE AND VERIFY THE HORIZONTAL AND VERTICAL LOCATIONS OF ALL POTENTIAL CONFLICTING UTILITIES. SHOULD A CONFLICT EXIST BETWEEN THE FIELD INFORMATION AND THE PLANS, THE CONTRACTOR WILL NOTIFY THE OWNER'S PROJECT MANAGER SO THE CONFLICT CAN BE RESOLVED WITH MINIMUM DELAY.
12. ALL CONSTRUCTION EASEMENTS ON PRIVATE PROPERTY WILL BE OBTAINED BY THE OWNER PRIOR TO THE BEGINNING OF CONSTRUCTION.
13. CONTRACTOR WILL CONFINED HIS WORK WITHIN THE CONSTRUCTION EASEMENT LIMITS AND/OR RIGHT-OF-WAY, OR PROVIDE COPIES OF AGREEMENTS WITH ADJACENT LANDOWNERS TO THE OWNER.
14. ALL WATER VALVES AND FIRE HYDRANTS REMOVED TO BE SALVAGED AND RETURNED TO THE CITY OF RIO RANCHO.
15. MINIMUM BOTTOM WIDTH OF TRENCHES FOR RIGID PIPE SHALL BE EQUAL TO THE OUTSIDE DIAMETER PLUS 16 INCHES. BEDDING MATERIAL SHALL BE CLASS II, III, OR IV UNLESS OTHERWISE SPECIFICALLY NOTED ON THE PLANS.
16. THE CONTRACTOR AGREES TO TAKE NECESSARY SAFETY PRECAUTIONS AS REQUIRED BY FEDERAL, STATE AND LOCAL AUTHORITIES TO PROTECT PEDESTRIAN AND VEHICULAR TRAFFIC IN THE CONSTRUCTION AREA, WHICH WILL INCLUDE BUT ARE NOT LIMITED TO: MAINTAINING ADEQUATE WARNING SIGNS, BARRICADES, LIGHTS , GUARD FENCES, WALKS AND BRIDGES.
17. ALL STRUCTURAL CONCRETE TO BE 4,000 PSI UNLESS OTHERWISE NOTED ON PLANS.
18. ALL REINFORCING STEEL TO BE GRADE 60 UNLESS OTHERWISE NOTED ON PLANS.
19. ALL EXPOSED EDGES ON CAST-IN-PLACE CONCRETE STRUCTURES WILL HAVE A 1" CHAMFER UNLESS OTHERWISE NOTED ON PLANS.
20. WHEN ABUTTING NEW PAVEMENT TO EXISTING INTERSECTING STREETS OR PATHS, SAW CUT EXISTING PAVEMENT TO A STRAIGHT LINE AND AT RIGHT ANGLES AND REMOVE ANY BROKEN OR CRACKED PAVEMENT. NO DIRECT PAYMENT WILL BE MADE FOR SAWCUTTING.

21. ALL SPLICES IN REINFORCING STEEL TO BE IN COMPLIANCE WITH SPLICE TABLE PROVIDED IN STRUCTURAL DETAILS.
22. ALL NEW STREET PAVING, DRIVEWAYS, SIDEWALKS, AND CURB AND GUTTERS, ABUTTING EXISTING AREAS SHALL MATCH THE ELEVATION OF THOSE AREAS.
23. ALL EXCAVATED MATERIAL THAT IS NOT REQUIRED TO BE REUSED MUST BE REMOVED FROM THE PROJECT AREA WITHIN FOUR DAYS OF EXCAVATION. SPOIL PILES WILL BE ALLOWED ONLY AS DIRECTED BY THE OWNER'S PROJECT MANAGER OR AS INDICATED ON THE PLANS. IN THE EVENT OF EXCESS MATERIAL AT SEDIMENT STOCK PILE LOCATIONS: COORDINATE WITH AND PROVIDE SSSACFA PROJECT MANAGER 48-HOURS PRIOR NOTICE FOR HAULING SEDIMENT.

- ALL TRAFFIC CONTROL DEVICES REQUIRED FOR DRIVEWAY CLOSURES, UTILITY CONSTRUCTION OR FOR OTHER REASONS AND NOT SHOWN ON THE SIGNING PLANS WILL BE FURNISHED BY THE CONTRACTOR AND WILL BE PAID AS SPECIFIED IN THE TECHNICAL SPECIFICATIONS AND BID PROPOSAL. PRIOR TO PLACING THE TRAFFIC CONTROL DEVICES, THE CONTRACTOR WILL NOTIFY THE AFFECTED OWNERS IN ACCORDANCE WITH THE SPECIFICATIONS.
25. THE CONTRACTOR WILL ASSUME RESPONSIBILITY FOR ANY DAMAGE TO EXISTING NMDOT/CITY OF RIO RANCHO/SAN JUAN COUNTY/SSACFCA/RIO RANCHO PUBLIC SCHOOLS AND PRIVATE LOTS INFRASTRUCTURE (C & G, PAVING, ETC.) DURING CONSTRUCTION, APART FROM THOSE SECTIONS INDICATED FOR REMOVAL ON THE PLANS. WILL REPAIR OR REPLACE SAME AT HIS OWN EXPENSE. HE WILL SUITABLY PROTECT THE CURB AND GUTTER FROM INCIDENTAL SPLASHING DURING THE TACK COAT APPLICATION AND WILL BE RESPONSIBLE FOR CLEANING SAME AT HIS OWN COST, SHOULD SPLASHING OCCUR.
26. ALL UTILITY LINES WHICH ARE NOT SPECIFICALLY DESIGNATED TO BE REMOVED AND REPLACED ON THE PLANS, WILL BE MAINTAINED IN SERVICE. SHORING, SHEETING AND OTHER MEANS OF SUPPORT SHALL BE EMPLOYED BY THE CONTRACTOR TO PREVENT DAMAGE OR LOSS OF THESE EXISTING UTILITIES. MEAN AND CABLE OR OTHER ADEQUATE SUPPORTS WILL BE USED OR TEMPORARY SUPPORT OF ALL UTILITY LINES WHICH CROSS THE TRENCH. ANY DAMAGE TO EXISTING UTILITIES WILL PROMPTLY BE REPAIRED AT THE CONTRACTOR'S EXPENSE. THE CONTRACTOR WILL NOTIFY THE ENGINEER IMMEDIATELY OF ANY SIGNIFICANT DEVIATION OF EXPOSED UTILITIES FROM THE LOCATIONS SHOWN ON THE PLANS SO THAT CONFLICTS CAN BE RESOLVED IN A TIMELY MANNER.
27. ALL INTERFERING PORTIONS OF ABANDONED UTILITY LINES WHICH ARE EXPOSED AS A RESULT OF CONSTRUCTION WILL BE REMOVED AND DISPOSED OF BY THE CONTRACTOR.
28. THE CONTRACTOR WILL BE RESPONSIBLE FOR SECURING NPDES PERMITS AND OTHER PERMITS AS REQUIRED BY APPLICABLE CITY, COUNTY, STATE, AND FEDERAL REGULATIONS.
29. ALL RIPRAP MATERIAL USED ON THIS PROJECT SHALL BE A NATURAL ROCK MATERIAL, CONFORMING TO THE SIZE AND MATERIAL PROPERTY REQUIREMENTS SET FORTH IN THE STANDARD SPECIFICATIONS. NO BROKEN CONCRETE OR RUBBLE WILL BE ACCEPTED.
30. FOR STORM DRAIN CONSTRUCTION, RCP PIPE OR ENGINEERED APPROVED JOINTS SHALL NOT BE GROUTED PRIOR TO FINAL INSPECTION. FINAL INSPECTION WILL DETERMINE JOINTS TO BE GROUTED FOR FINAL ACCEPTANCE OF THE CONSTRUCTION.
31. ALL CONSTRUCTION SHALL REMAIN WITHIN SCAFCFA ROW AND TEMPORARY CONSTRUCTION EASEMENTS (TCE) OBTAINED BY SCAFCFA.
32. SCAFCFA SHALL BE NOTIFIED 48 HOURS PRIOR TO ANY WORK WITHIN SCAFCFA ROW. TELEPHONE (505) 892-7246.
33. SCAFCFA SHALL BE NOTIFIED 48 HOURS PRIOR TO FINAL INSPECTION OF ANY FACILITIES WITHIN SCAFCFA ROW.
34. AREAS DESIGNATED ON PLANS SHALL BE REVEGETATED IN ACCORDANCE WITH APWA STANDARD SPECIFICATION 1012.
35. STORM DRAINS TO BE BUILT WITH EITHER CLASS IV REINFORCED CONCRETE PIPE PER APWA SPECIFICATION 910 OR UPON APPROVAL FROM ENGINEER. PLAN DETAILS SUCH AS SPACING FOR REBAR AND THICKNESS OF CONCRETE MAY CHANGE BASED ON PIPE WALL THICKNESS. SEE STRUCTURAL DETAILS AND VERIFY WITH ENGINEER.
36. CONTRACTOR SHALL USE THE NMAPWA SPECIFICATIONS 109 & 803 FOR RIPRAP STONE GRADATION AND GRAVEL FILTER MATERIAL ASSOCIATED WITH ALL CONSTRUCTION OF "PLUNGE POOLS AND STILLING BASINS". GRADATIONS ARE SHOWN ON THIS SHEET.
37. CONTRACTOR WILL BE RESPONSIBLE TO RESEED ANY ADDITIONAL AREA DISTURBED OUTSIDE OF THE LIMITS SHOWN ON THE PLANS. ADDITIONAL RE-SEEDING WILL BE INCIDENTAL TO THE PROJECT
38. ENGINEER TO APPROVE RIPRAP SAMPLE PROVIDED BY CONTRACTOR PRIOR TO CONSTRUCTION.

DESIGNATION TYPE VL	MAX. DIMENSIONS 12 (0.30) 9 (0.25) 50-70 6 (0.15) 35-55 3 (0.08) 10	%SMALLER 100	Km [1]
TYPE L	18 (0.45) 12 (0.30) 6 (0.15) 35-55 3 (0.08) 10	100 50-70	6
TYPE M	24 (0.60) 18 (0.45) 12 (0.30) 6 (0.15)	100 50-70 30-55 10	9
[1] Km = MEAN PARTICLE SIZE (INCHES)			12

NOTE: CLASSIFICATION GRADATION WILL APPLY FOR ALL RIPRAP AND ARMORING APPLICATIONS FOR THIS PLAN SET. SEE ABOVE FOR CLASSIFICATION.

FOR ALL RIPRAP: FILL VOIDS OF RIPRAP WITH GRAVEL FILTER MATERIAL.

FILTER MATERIAL SHALL BE CONSIST OF CRUSHED ROCK MEETING THE FOLLOWING GRADATION, OR ENGINEER APPROVED EQUIVALENT.

U.S. STANDARD SIEVE SIZE	PASSING BY WEIGHT
1"	100
3/4"	45-65
#4	25-45
#40	0-20
#200	0-5

FILTER MATERIAL SHALL BE PLACED BENEATH THE RIPRAP AS SHOWN HEREON. THE FILTER MATERIAL SHALL BE TAMPED AND SHAPED TO FORM A SMOOTH, EVEN, AND FIRM FOUNDATION FOR THE OVERLYING RIPRAP. THE CONTRACTOR'S OPERATIONS AND METHODS OF PLACING SHALL PREVENT SEGREGATION OF THE MATERIALS. THE FILTER MATERIAL SHALL ALSO BE PLACED AND COMPACTED IN THE VOID SPACES OF THE RIPRAP.

1. THE CONTRACTOR SHALL CONFORM TO ALL CITY, COUNTY, STATE AND FEDERAL DUST AND EROSION CONTROL REGULATIONS. THE CONTRACTOR SHALL PREPARE AND OBTAIN ANY NECESSARY DUST OR EROSION CONTROL PERMITS FROM REGULATORY AGENCIES.
2. THE CONTRACTOR SHALL PROMPTLY REMOVE ANY MATERIAL EXCAVATED WITHIN THE PUBLIC RIGHT-OF-WAY TO KEEP IT FROM WASHING OFF THE PROJECT SITE.
3. THE CONTRACTOR SHALL ENSURE THAT NO SOIL ERODES FROM THE SITE ONTO OTHER PROPERTY BY CONSTRUCTING TEMPORARY EROSION CONTROL BERMS OR PLAN. INSTALLING SILT FENCES AT THE PROPERTY LINES AND AS NEEDED TO PREVENT MIGRATION OF SEDIMENT INTO CHANNEL.
4. THE CONTRACTOR SHALL MITIGATE EROSION OF THE TEMPORARY OR PERMANENT DIRT SWALES BY INSTALLING CHECK DAMS IN THE SWALES PERPENDICULAR TO THE DIRECTION OF FLOW.
5. THE CONTRACTOR SHALL WET THE SOIL AS NEEDED TO KEEP IT FROM BLOWING. WATERING, AS REQUIRED FOR CONSTRUCTION AND DUST CONTROL, SHALL BE CONSIDERED INCIDENTAL TO CONSTRUCTION AND NO MEASUREMENT OR PAYMENT SHALL BE MADE THEREOF. CONSTRUCTION AREAS SHALL BE WATERED FOR DUST CONTROL IN COMPLIANCE WITH GOVERNMENT ORDINANCES. THE CONTRACTOR SHALL BE RESPONSIBLE FOR LOCATING AND SUPPLYING WATER AS REQUIRED.
6. ANY AREAS DISTURBED BY CONSTRUCTION AND NOT COVERED BY LANDSCAPING OR ANY IMPERVIOUS SURFACE SHALL BE REVEGETATED WITH NATIVE GRASS SEEDING. WHEN CONSTRUCTION ACTIVITIES CEASE AND EARTH DISTURBING ACTIVITIES WILL NOT RESUME WITHIN 14 DAYS, STABILIZATION MEASURES MUST BE INITIATED. UNLESS INDICATED OTHERWISE ON THESE PLANS OR ON THE LANDSCAPING PLAN. SEEDING SHALL BE NATIVE GRASS SEEDING PER SECTION 1012 OF THE APWA STANDARD SPECIFICATIONS FOR PUBLIC WORKS CONSTRUCTION.
7. ALL WASTE PRODUCTS FROM THE CONSTRUCTION SITE, INCLUDING ITEMS DESIGNATED FOR REMOVAL, CONSTRUCTION WASTE, CONSTRUCTION EQUIPMENT WASTE PRODUCTS (OIL, GAS, TIRES, ETC), GARBAGE, GRUBBING, EXCESS CUT MATERIAL, VEGETATIVE DEBRIS, ETC. SHALL BE APPROPRIATELY DISPOSED OF OFF SITE AT NO ADDITIONAL COST TO THE OWNER. IT SHALL BE THE CONTRACTOR'S RESPONSIBILITY TO OBTAIN PERMITS REQUIRED FOR HAUL OR DISPOSAL OF WASTE PRODUCTS. IT SHALL BE THE CONTRACTOR'S RESPONSIBILITY TO ENSURE THAT THE WASTE DISPOSED SITE COMPLIES WITH GOVERNMENT REGULATIONS REGARDING THE ENVIRONMENT, ENDANGERED SPECIES AND ARCHAEOLOGICAL RESOURCES.
8. THE CONTRACTOR SHALL BE RESPONSIBLE FOR THE CLEANUP AND REPORTING OF SPILLS OF HAZARDOUS MATERIALS ASSOCIATED WITH THE CONSTRUCTION SITE. HAZARDOUS MATERIALS INCLUDE GASOLINE, DIESEL FUEL, MOTOR OIL, SOLVENTS, CHEMICALS, PAINTS, ETC. WHICH MAY BE A THREAT TO THE ENVIRONMENT. THE CONTRACTOR SHALL REPORT THE DISCOVERY OF PAST OR PRESENT SPILLS TO THE NEW MEXICO ENVIRONMENT DEPARTMENT EMERGENCY RESPONSE AT 1-(505)-827-9329.
9. THE CONTRACTOR SHALL COMPLY WITH ALL APPLICABLE REGULATIONS CONCERNING SURFACE AND UNDERGROUND WATER. CONTACT WITH SURFACE WATER BY CONSTRUCTION EQUIPMENT AND PERSONNEL SHALL BE MINIMIZED. EQUIPMENT MAINTENANCE AND REFUELING OPERATIONS SHALL BE PERFORMED IN AN ENVIRONMENTALLY SAFE MANNER IN COMPLIANCE WITH GOVERNMENT REGULATIONS.
10. THE CONTRACTOR SHALL COMPLY WITH ALL APPLICABLE REGULATIONS CONCERNING CONSTRUCTION NOISE AND HOURS OF OPERATION.
11. WHERE STORM INLETS ARE SUSCEPTIBLE TO INFLOW OF SILT OR DEBRIS FROM CONSTRUCTION ACTIVITIES, PROTECTION SHALL BE INSTALLED ON THEIR UPSTREAM SIDE.
12. THE CONTRACTOR SHALL PREPARE AND MAINTAIN A COPY OF THE STORM WATER POLLUTION PREVENTION PLAN (SWPPP) ON-SITE AT ALL TIMES, AND COMPLY WITH THE REQUIREMENTS INDICATED ON THAT PLAN.
13. A MINIMUM OF 21 DAYS PRIOR TO COMMENCING EARTH DISTURBING ACTIVITIES, CONTRACTOR SHALL FILE A NOTICE OF INTENT (NOI) WITH EPA FOR CONSTRUCTION GENERAL PERMIT COMPLIANCE. COPIES OF THE NOI RECEIPT AND SWPPP SHALL BE SENT TO OWNER.
14. AT END OF CONSTRUCTION AND AFTER STABILIZATION ACTIVITIES CONTRACTOR SHALL SUBMIT NOTICE OF TERMINATION (NOT).
15. CONTRACTOR SHALL CONFORM TO USACE 404 PERMIT CONDITIONS, IF ANY.

1. IF THIS DRAWING IS OTHER THAN FULL SIZE, 24"x36", UTILIZE BAR SCALE IN LIEU OF NUMERIC SCALE

1. IF THIS DRAWING IS OTHER THAN FULL SIZE, 24"x36", UTILIZE BAR SCALE IN LIEU OF NUMERIC SCALE

PROPERTY LINE	_____
EASEMENT BOUNDARY	_____
EXISTING CONTOUR MAJOR	_____
EXISTING CONTOUR MINOR	_____
PROPOSED CONTOUR MAJOR	_____
PROPOSED CONTOUR MINOR	_____
PROPOSED FENCE	_____ X _____ X _____
EXISTING GROUND	_____
PROPOSED GROUND	_____
ALIGNMENT	_____
CONTOUR TERRACES	_____

NOTE: SEE SHEET G-103 FOR SURVEY LEGEND AND NOTES.

**SSCAFCA**  
ANDRES SANCHEZ P.E.  
1041 COMMERCIAL DRIVE SE  
RIO RANCHO, NM 87124  
(505) 892-7246  
ASANCHEZ@SSCAFCA.COM

CDS FORMALLY RESPEC  
CASSY MCCLINTOCK, P.E.  
9384 VALLEY VIEW DRIVE NW, SUITE 100  
ALBUQUERQUE, NM 87114  
(505) 205-5723  
CASSY.MCCLINTOCK@CDSNM.COM

CITY OF RIO RANCHO UTILITIES DEPARTMENT  
DAVID SERRANO, P.E.  
3200 CIVIC CENTER CIRCLE NE  
RIO RANCHO, NEW MEXICO 87124  
SUITE 250  
(505) 891-5059  
DSERRANO@RNNM.GOV

PNM  
GILBERT HERNANDEZ  
ENGINEER 4  
3150 CARLISLE BLVD. NE, ES-10  
ALBUQUERQUE, NEW MEXICO 871  
(505) 241-3622  
GILBERT.HERNANDEZ@PNM.COM




PNM- OVERHEAD ELECTRIC TRANSMISSION LINES  
REID DRISCOLL  
4201 EDITH BLVD. NE, ES-10  
ALBUQUERQUE, NEW MEXICO 87107  
(505) 241-2971  
GILBERT.HERNANDEZ@PNM.COM

SPARKLIGHT  
ANTHONY LOVATO  
CONSTRUCTION COORDINATOR  
7501 NITA PLACE NE  
RIO RANCHO, NEW MEXICO 87144  
(505) 241-2971  
ANTHONY.LOVATO@SPARKLIGHT.BIZ

**LUMEN**  
ABDUL BHUIYAN  
ENGINEER 2  
4301 BOGAN AVE NE  
ALBUQUERQUE, NEW MEXICO 87109  
(505) 886-4665

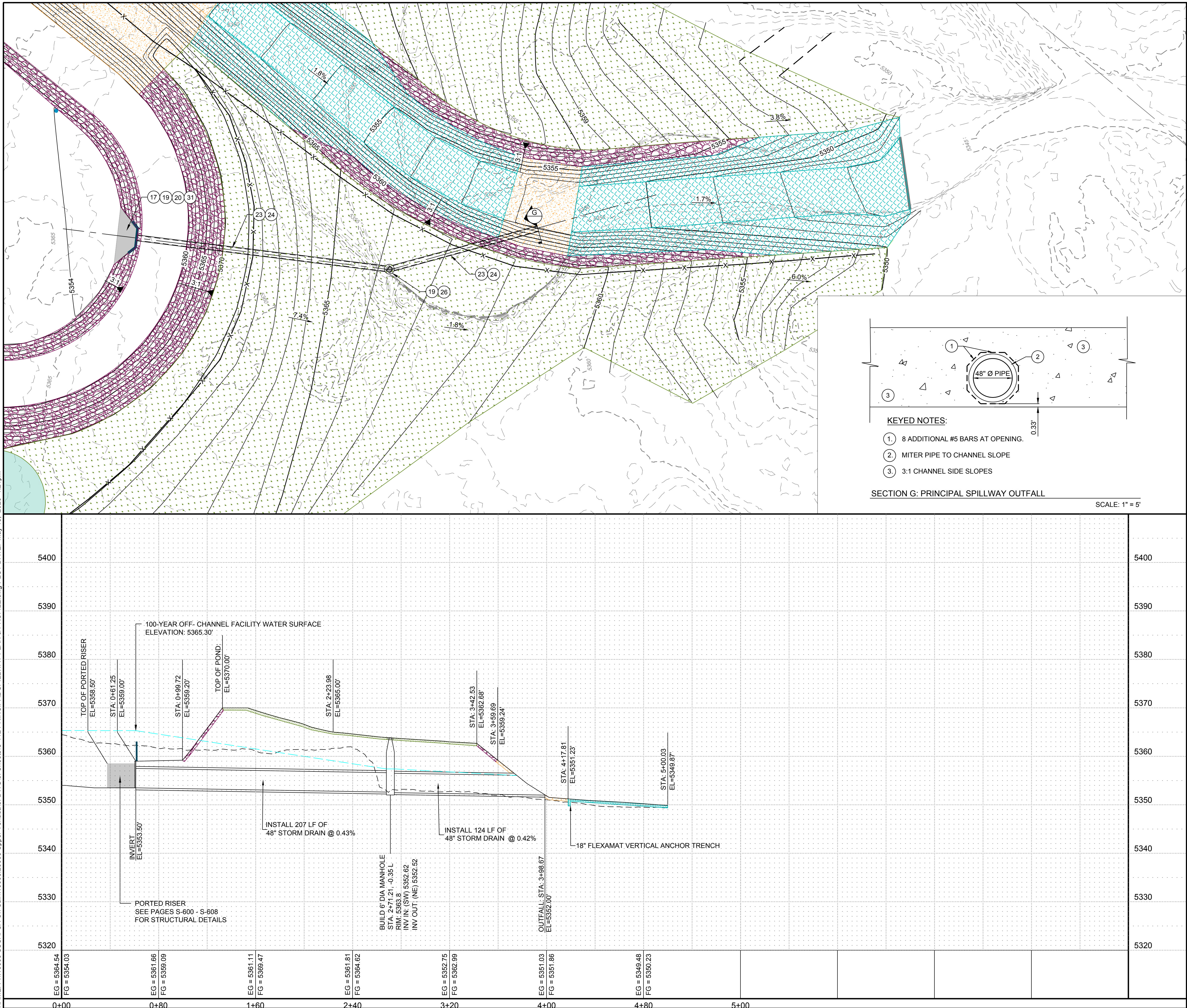
NM GAS COMPANY  
ELBERT BALLADO  
DISTRICT ENGINEER 1  
4625 EDITH BLVD. NE, MS-GS65  
ALBUQUERQUE, NEW MEXICO 87107  
(505) 798-3346  
ELBERTMARTIN.BALLADO@NMGCO.COM

**FLEXAMAT**  
DREW BERTELSON  
TECHNICAL SALES ENGINEER  
(303) 720-2345  
DREW.BERTELSON@HANESCOMPANIES.COM

SUBMITTED FOR:		SHEET TITLE:		PROJECT NAME:		PROJ. #: W0005.23005	
CONSTRUCTION		GENERAL NOTES & LEGEND		UPPER VENADA OFF-CHANNEL FACILITY			
SHEET NUMBER:		G-102-R					
STAMP		<div><div><div><b>RESPEC</b> COMMUNITY DESIGN SOLUTIONS 7750 S. GARDEN AVENUE, SUITE 200 ALBUQUERQUE, NEW MEXICO 87109 WWW.RESPEC.COM PHONE: (505)253-9718</div><div><p>07/29/2024</p></div></div><div><p>THIS DRAWING IS INCOMPLETE AND NOT TO BE USED FOR CONSTRUCTION UNLESS IT IS STAMPED, SIGNED AND DATED</p></div></div>					
DESIGNED		RESPEC		DRAWN		RESPEC	
CHECKED		RESPEC		DATE		5.13.2025	
REVISION		REMOVE HDPE PIPE OPTION FOR SD, UPDATE QDS CONTACT INFO 05.13.2025					



NAME: P:\W0005 SSSCAFECA On Call\W0005.23005 Upper Venada3 DWG15 SheetsC-112 PRINCIPAL SPILLWAY PLAN & PROFILE.dwg PLOT DATE: May 13, 2025 1:21pm



LEGEND

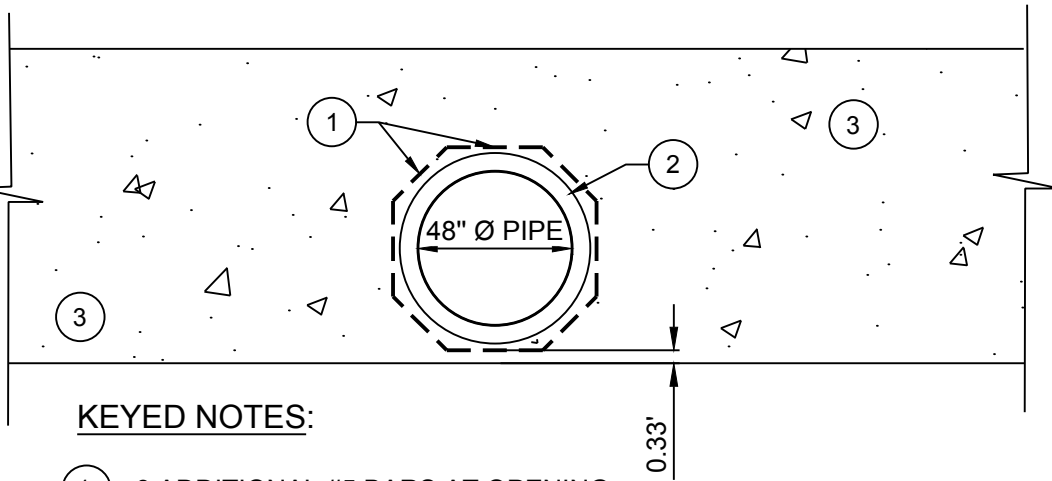
- NATIVE GRASS SEEDING
- SEEDING WITH GRAVEL MULCH
- 6" STRUCTURAL CONCRETE
- 6" PCC SHOTCRETE
- 6" AGGREGATE BASE COURSE
- FLEXAMAT PLUS 10NW
- METAL RAILINGS
- SEDIMENT STAGE POSTS
- HYDRAULIC GRADE LINE

NOTES:

- SEE SHEETS G-104 FOR FENCING LEGEND
- ARMORING THICKNESS NOT TO SCALE IN PROFILE OR SECTION VIEWS
- SEE SHEETS C-113 - C-115 FOR FLEXAMAT LAYOUT DETAILS AND DETAIL SHEETS C-505 & C-506 FOR FLEXAMAT INSTALLATION GUIDELINES
- SEE SHEET C-509 FOR CITY OF RIO RANCHO CONCRETE MANHOLE PAD DIMENSIONS

BUILD NOTES:

17	APWA 301	SUBGRADE PREPARATION: 12-INCH AT 95% COMPACTION PER GEOTECHNICAL REPORT UNDER ALL CONCRETE, C.I.P.
19	APWA 510	STRUCTURAL CONCRETE 4,000 PSI: PRINCIPAL SPILLWAY PORTED RISER (INCLUDING FLOWABLE FILL AND SAWCUTTING), INTAKE RUNDOWN, MAINTENANCE ROAD, CHANNEL TURNDOVNS, MANHOLE PAD AND BOX CULVERT 2' HEADWALL, APRON AND WINGWALLS INCLUDES FORMWORK C.I.P.
20	NMDOT 541	STEEL MARKER: 1'-6" X 5' X 1/8" SEDIMENT STAGE SIGN, INCLUDES ALL MATERIALS, LABOR, C.I.P.
23	APWA 910	48" STORM DRAIN: PRINCIPAL SPILLWAY OUTFALL, C.I.P.
24	SSCAFECA 1510	TRENCHING, BACKFILLING, & COMPACTION, 42" TO 60" SEWER PIPE, OVER 8' TO 12' IN DEPTH, PIPE NOT INCL. COMPL.
26	APWA 920	MANHOLE, 6' DIA., TYPE C, 10' TO 14' DEEP, CIP, INCLUDING MANHOLE COVER FOR STORM DRAINAGE PER CITY OF RIO RANCHO DWG S-02, S-03-01 AND S-03-02
31	APWA 510	GRATE COVER: FOR THE PRINCIPAL SPILLWAY PORTED RISER.



KEYED NOTES:

- 8 ADDITIONAL #5 BARS AT OPENING.
- MITER PIPE TO CHANNEL SLOPE
- 3:1 CHANNEL SIDE SLOPES

SECTION G: PRINCIPAL SPILLWAY OUTFALL

SCALE: 1" = 5'

SCALE:  
HORIZONTAL: 1" = 40'  
VERTICAL: 1" = 10'



DESIGNED RESPEC  
DRAWN RESPEC  
CHECKED RESPEC  
DATE 5.13.2025

COMMUNITY DESIGN SOLUTIONS  
1777 ALBUQUERQUE, NEW MEXICO 87109  
WWW.RESPEC.COM PHONE: (505) 253-9718

RESPEC

REVISION  
1 REVISE SPEC SECTION CALL OUT 05.13.2025

STAMP  
CASSY L. MCCLINTOCK  
NEW MEXICO  
29490  
PROFESSIONAL ENGINEER  
07/29/2024  
THIS DRAWING IS INCOMPLETE  
AND NOT TO BE USED FOR  
CONSTRUCTION UNLESS IT IS  
STAMPED, SIGNED AND DATED  
nm811  
Know what's below.  
Call before you dig.  
PROJ. #: W0005.23005

PROJECT NAME:  
UPPER VENADA  
OFF-CHANNEL FACILITY

SHEET TITLE:  
PRINCIPAL  
SPILLWAY PLAN &  
PROFILE

ISSUED FOR:  
CONSTRUCTION

SHEET NUMBER:  
C-112-R



